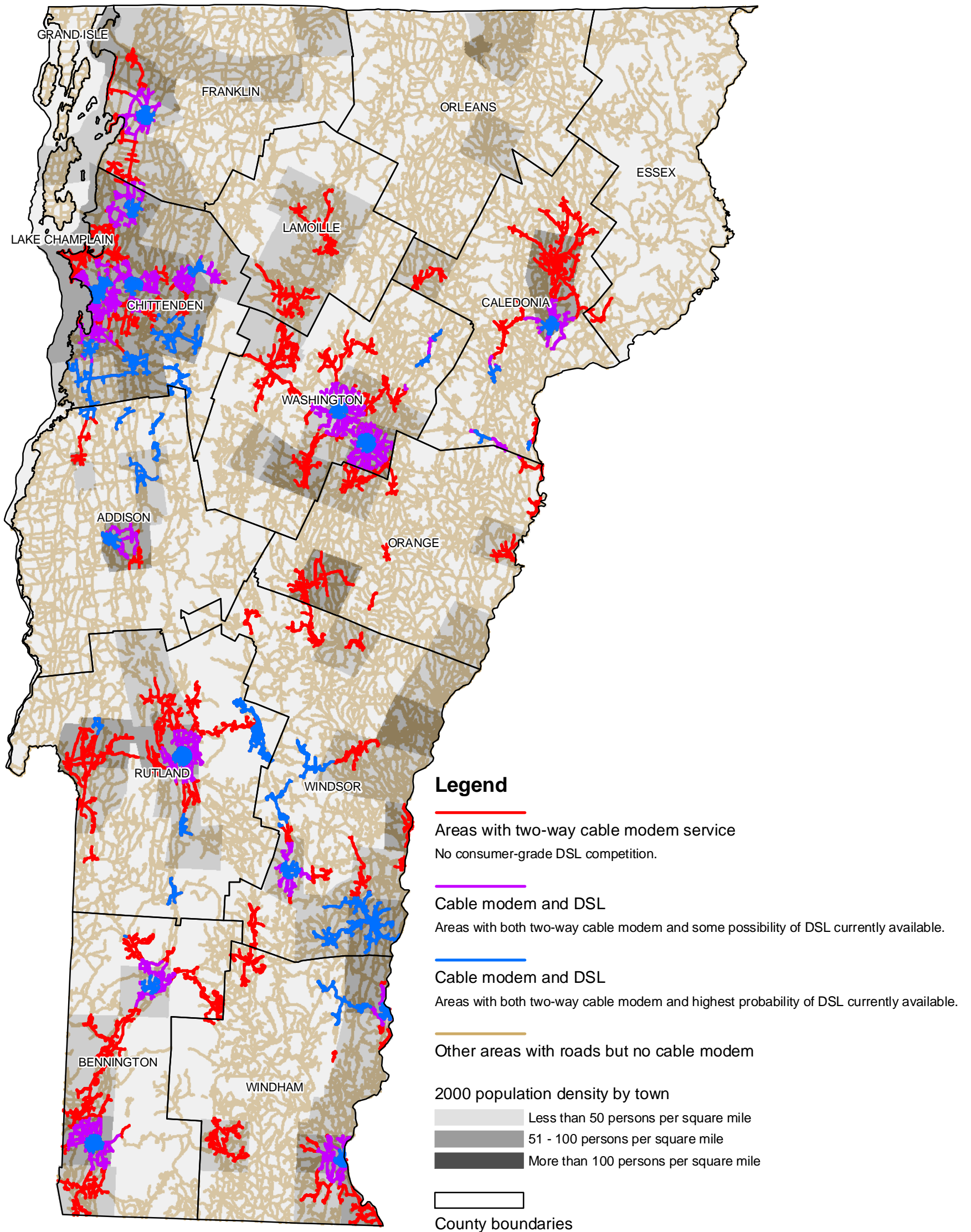


Cable Modem Service in Vermont July 2002 With Areas Facing Competition from Consumer-Grade DSL



A note on this map: The cable modem areas are based on known information about roads passed by cable systems and cable systems with cable modem service. Information about areas with DSL is not known with the same level of certainty, and has been modeled. DSL areas shown are generally not more than 18,000 aerial feet of a point through which DSL is offered, or are in an exchange of a telephone company using DSL technology designed to work at distances greater than 18,000 feet. Highest probability areas are within 6,000 aerial feet of a point through which DSL is offered, or are within exchanges of telephone companies with systematic programs to cover most customers with DSL, regardless of distance.