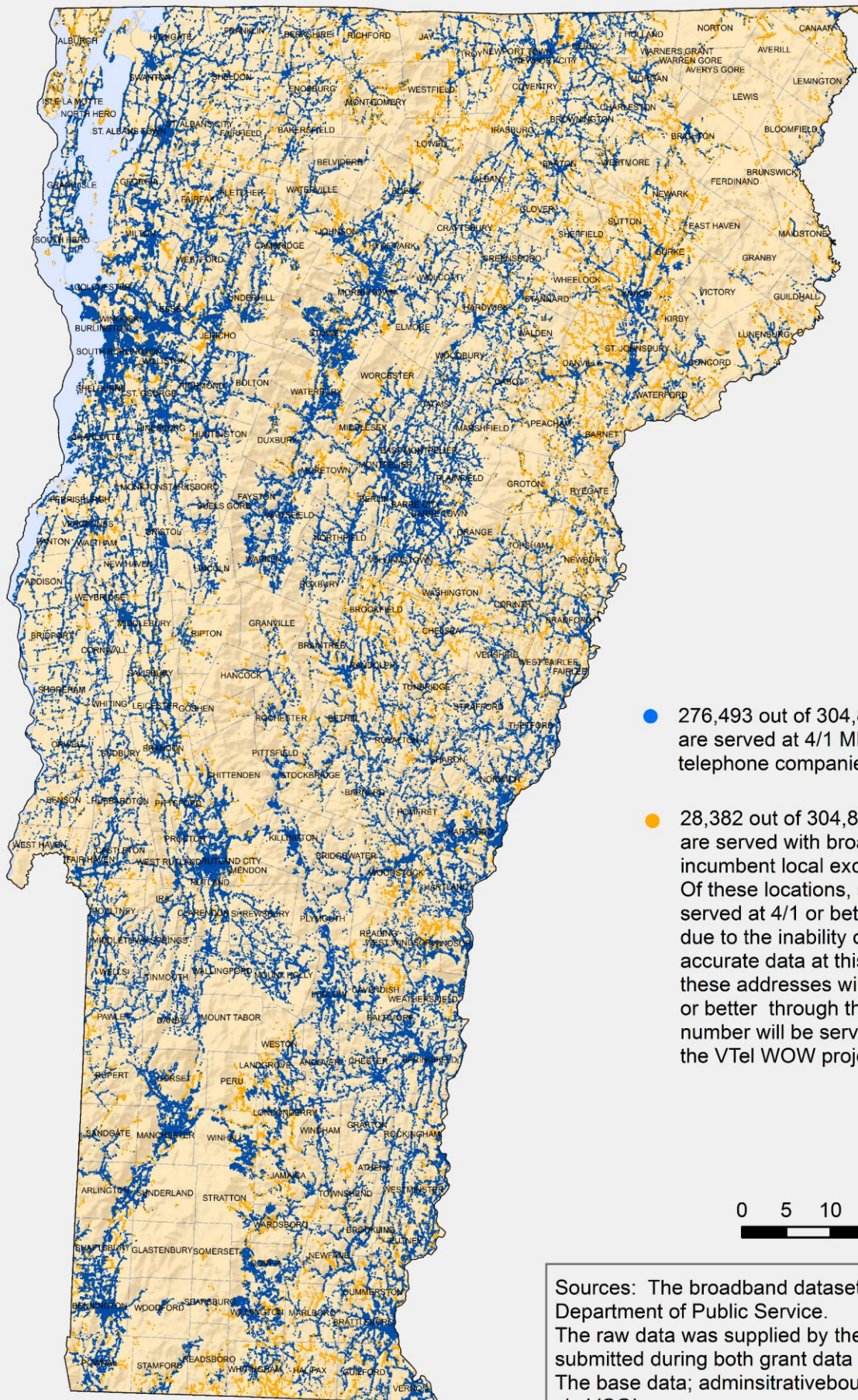


# Broadband Availability by Building Location 4 Mbps Down / 1 Mbps Up or Better



- 276,493 out of 304,875 (90.7%) building locations are served at 4/1 Mbps or better by independent telephone companies, cable, or fiber to the premises.
- 28,382 out of 304,875 (9.3%) building locations are served with broadband less than 4/1 by the incumbent local exchange carrier of VTel WOW. Of these locations, some number are already served at 4/1 or better but this cannot be verified due to the inability of the companies to provide accurate data at this time. In addition, some of these addresses will receive upgrades of 4/1 MBps or better through the CAF II program, and some number will be served at 4/1 Mbps or better by the VTel WOW project.

0 5 10 20  
Miles

Sources: The broadband dataset was developed by the Vermont Department of Public Service. The raw data was supplied by the service providers based on data submitted during both grant data contest periods in 2016. The base data; administrative boundaries, roads supplied via VCGI.