

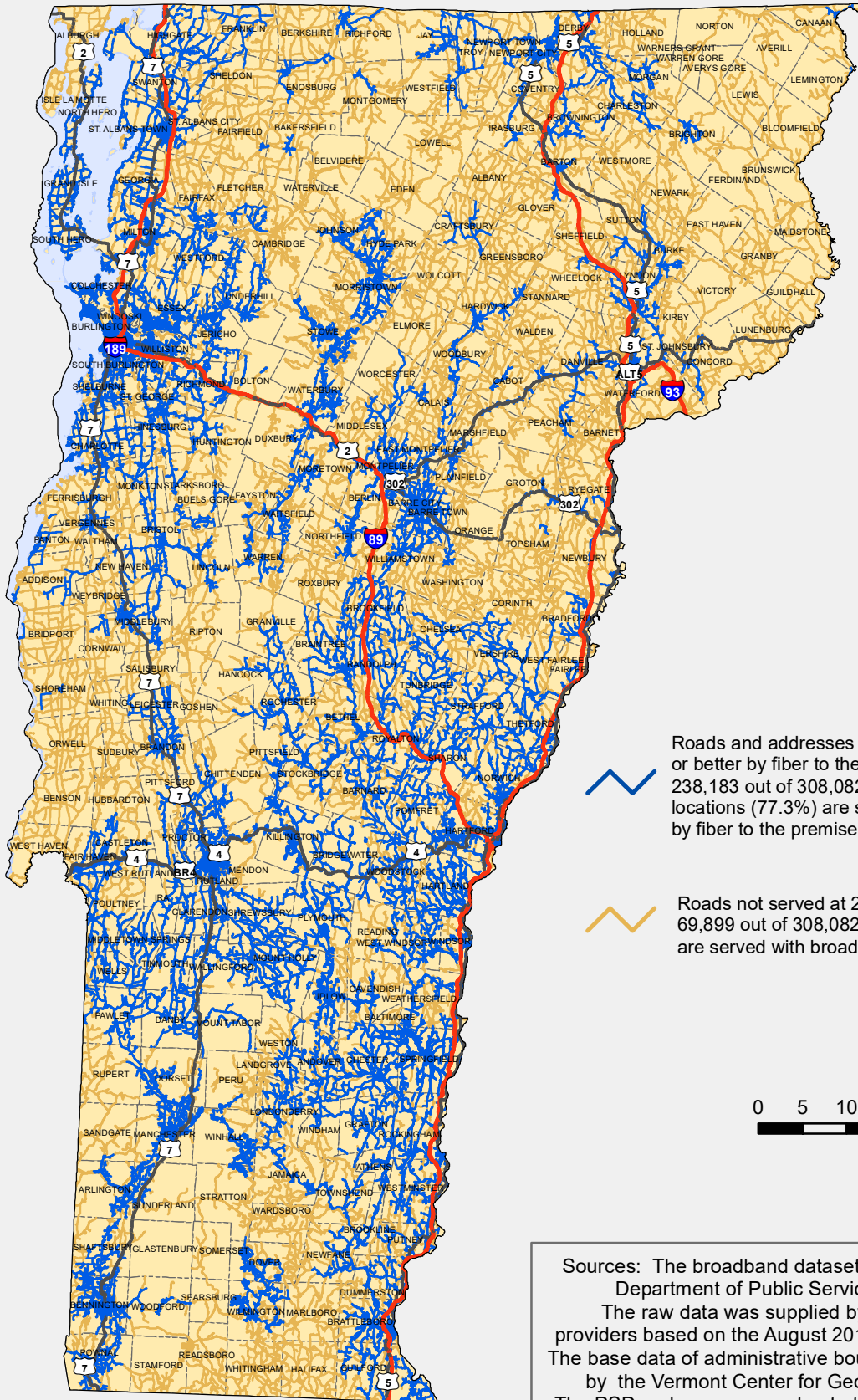
# Broadband Availability by Road Segment


## 25 Mbps Down / 3 Mbps Up or Better




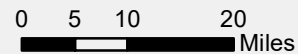
Department of Public Service

August 30, 2019



 Roads and addresses served at 25/3 Mbps or better by fiber to the premises or cable. 238,183 out of 308,082 building locations (77.3%) are servicable at 25/3 Mbps or better by fiber to the premises or cable.

 Roads not served at 25/3 Mbps or better. 69,899 out of 308,082 building locations (22.7%) are served with broadband less than 25/3.



Sources: The broadband dataset was prepared by the Vermont Department of Public Service (PSD) on 2/21/2020. The raw data was supplied by Vermont internet service providers based on the August 2019 PSD request for information. The base data of administrative boundaries and roads are supplied by the Vermont Center for Geographic Information (VCGI). The PSD makes no guarantee to the accuracy of this information.