

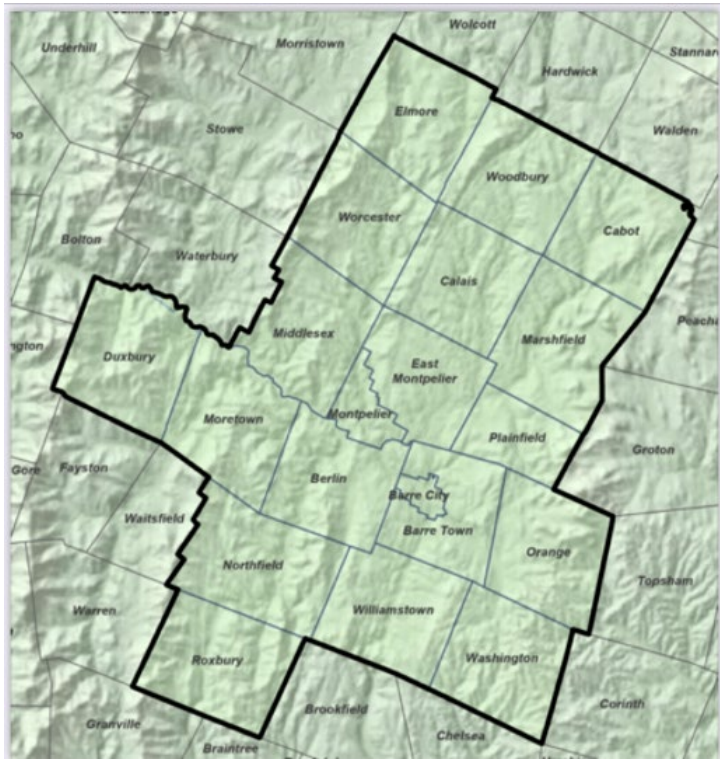
Staffing Proposal

Executive Director			
Deputy Director			
VCBB Staff			
GIS Professional – Unclear whether this person could also be a shared resource	Legal - Grant agreements, public records, policies questions, etc	Administrative Assistant	Finance – Drafting grant agreements, contracts, federal and state reporting
PSD Support Services			
Payroll	Other Admin Services	Space and Technology	Grant Admin
Examples of Potential Shared Resources for CUDs			
GIS Repository – Single repository and licenses for each CUD. Staff of contract with a company to perform any necessary GIS. This could be the same professional used internally	Legal - - Contract Negotiation and Review; CPG and E911, ETC. designation, other state and federal compliance issues; Open Meeting/Records	Grants and Finance Management (Similar to the role the Local Development Districts pay for NBRC programs (https://www.nbrc.gov/content/local-development-districts - described here))	
Materials Procurement	Technology	Grant Writer	
Low Income Program Development	Workforce recruitment	Marketing	
Additional review of business plans	High-Level Design & Detailed engineering	Reviewing HLD and/or detailed engineering to ensure a statewide resilient/redundant network	



Pre-Construction Sequence

- DVFiber selected GWI as its vendor partner through a rigorous RFP process
- We are preparing an engineering and pre-construction contract that will be ready for signature when we have a pre-construction grant commitment
- **Key strategic goal:** Begin construction immediately after mud season in 2022
- **Key challenge:** Complete sufficient pre-construction in 2021
 - Complete High-Level Design for all 24 towns
 - Complete Utility Pole Surveys in remaining Phase One towns (4 now complete)
 - Complete detailed Engineering for 2022 Construction
 - Iterate financial plan based on Design and Engineering findings
 - Submit pole applications for Utility Make-Ready
 - Prepare RFPs for construction subcontractors
- **Recommendation:** Focus state-wide design on middle-mile connections between major carrier interconnection points, CUD PON networks, CUD “islands”, and electric utilities, all of which operate to support the public good
- **Immediate Next Step:** Clarify Pre-Construction grant RFP requirements / process



Providing Central Vermont residents, businesses, and civic institutions with universal access to a reliable, secure, locally-owned and -governed communications network able to grow to meet future community needs.

Phase 1: The Underserved

- Construct core svc ring (~600 mi)
- Cover 85% of unserved/underserved
- Construction: 2021–2023
- Service rollout begins: 2022

Phase 2: Build out from the Core

- Service entire district (add ~600 mi)
- Construction: 2024–2025
- Service rollout begins: 2024

CVFiber Community Network Estimated Costs 2021 - 2025 (\$000)							
		2021	2022	2023	2024	2025	Total
1	Pole Inventory	725	0	0	0	0	\$ 725
2	High Level Design	125	0	0	0	0	\$ 125
3	Design & Engineering	750	0	0	0	0	\$ 750
4	Make-Ready	250	750	750	0	0	\$ 1,750
5	Construction	0	7,860	8,360	9,600	4,750	\$ 30,570
6	Service	0	2,500	2,660	3,050	1,500	\$ 9,710
7	Total	\$ 1,850	\$ 11,110	\$ 11,770	\$ 12,650	\$ 6,250	\$ 43,630

Past & current events

2018:	CVFiber formed	
2020:	Completed Feasibility & Business Studies	
	Conducted Survey of District	
2021:	Issued Pole Inventory Services RFP	February
	Executed Pole Inventory retainer contracts	April
	Issued High-Level Design RFPs	May
	Engaged Project Manager	June
	Issued RFP for Network Developer/Operator	July
	Launch Area A pole inventories	August
	Execute High-Level Design contracts	August
	Launch High-Level Design	August

Activity Schedule *(subject to funding, material, and contractor availability)*

	Preconstruction				Construction: Phase 1					Construction: Phase 2				
	Miles Total	Pole Inventory	High Level Design	Detailed Engineering	Phase 1 Miles	Under-served Premises	Make-Ready	Construction	Service	Phase 2 Miles	Under-served Premises	Make-Ready	Construction	Service
Area A	300				150		2021			150		2023		2025
						1,594	96%				69	4%		
Area B	475				160			2022		315				2024
						1,795	65%				984	35%		
Area C	300				300			2023						
	1,075				610	2,102	100%			465				
			2021	2022		2023	2024			2025				

Lamoille FiberNet CUD serves a population of ~23,000 in nine north-central Vermont towns:
Belvidere, Cambridge, Eden, Hyde Park, Johnson, Morristown, Stowe, Waterville, and Wolcott.

- **Status update for pre-construction**

- Completed feasibility study, high level design, and business plan.
- Conducted second party review of business plan review.
- Completed pole data collection in priority areas, as available funds allowed.
- Co-authored RFP for partners with NEK Broadband; currently in discussions with potential partners.
- Transitioning into systems for management (ARC GIS, executive director, project management & data storage software, etc.)

- **Next steps (6-9 months)**

- Select and negotiate MOU with ISP partner(s), with legal review and financial analysis before executing.
- Update high-level design and business plan, including phasing in with partner(s).
- Apply to VCBB for grant funding.
- Once funded: create detailed design, coordinating with neighboring CUD designs as needed to best serve our district; procure equipment and construction services, then request make-ready.
- We believe the Pre-Construction grant will be sufficient to support Lamoille FiberNet until it applies to VCBB for grant that will fund detailed design and construction.

NEK Community Broadband

Formed on April 30, 2020 after affirmative March Town Meeting votes by 26 towns, NEK Broadband has almost doubled in size, creating the largest and most rural district in Vermont.



17,000+

Un/underserved addresses
represents **25% of state total**



2800+

Miles of fiber to
construct

Accomplishments To Date

- Completed Feasibility Study & Business Plan (VT DPS BIG)
- Awarded \$460,000 CARES funds for Concord/Waterford Pilot
- Awarded \$276,000 H.315 VT DPS Preconstruction Funding
- Request for Partnerships Process in Final Round
- Released RFP for WEC & Muni Elec Pole Surveys

Current Activities

- Presenting Business Plan to Member Selectboards
- Concord/Waterford Pilot Project Make Ready, Detailed Design Underway
- Negotiating partnership for Network Construction Management & Operator
- Part of 3 CUD Partnership negotiating MOU and DFA with Washington Electric Coop(WEC)

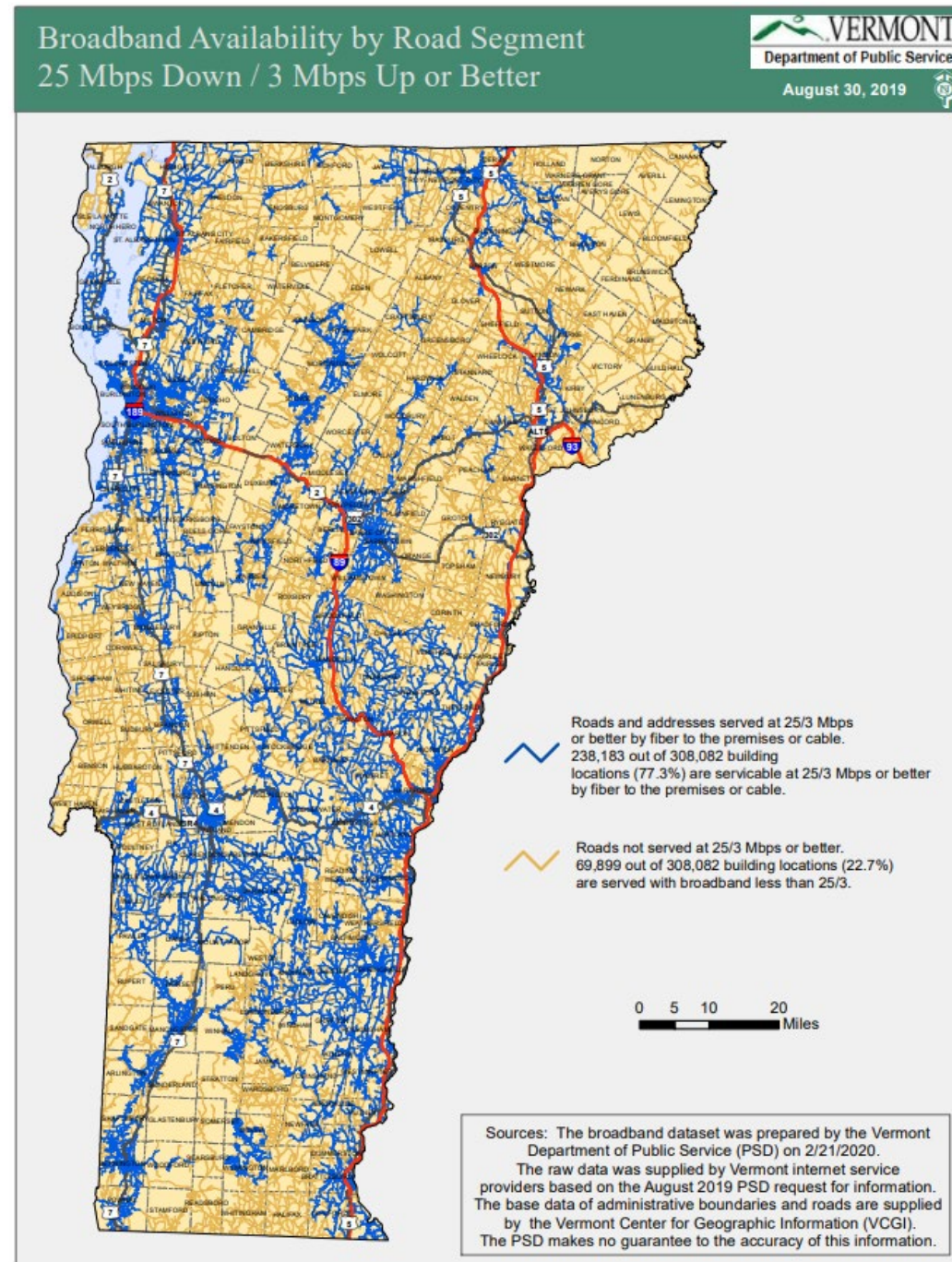
Fall 2021 & Early 2022 Goals

- Light up Concord/Waterford Pilot
- Award Construction and Operator Contracts
- Finalize Dark Fiber Agreement with WEC
- Complete State Fiber & Northern Enterprise Asset Transfer in NEK
- Update Business Plan with New Financing Details
- Hire Long-term Administrator/ED

About 60,000 locations in Vermont without broadband.

Unserved: No broadband service at all)

Underserved: (service is available at less than 25/3 Mbps. i.e., dial-up or DSL).



52,759 do not have plans for any existing carrier to deploy wired service

Removed the following:

- RDOF addresses*
- 2020 Connectivity Initiative
- 2020 Line Extension Program

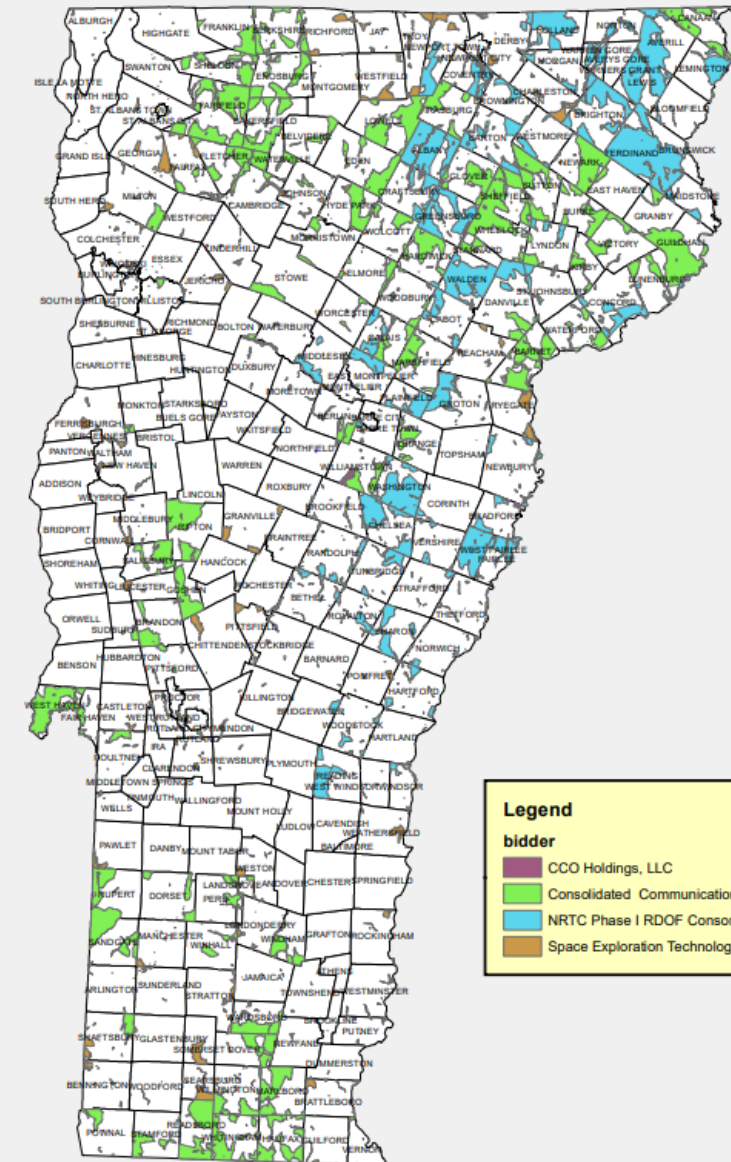


FCC's Rural Digital Opportunity Fund

*These addresses are not 100% funded

CUD	RDOF minus Starlink
	Note: Splits are shared 50/50
ADDISON CUD	603
CVFiber	1725
Deerfield Valley	1649.5
ECFiber	2019
Lamoille FiberNet CUD	782
NEK Broadband	6377
Northwest CUD	1320
Otter Creek CUD	317
Southern Vermont CUD	488.5

RDOF Award Areas in Vermont



CUD	# Unserved/Underserved Addresses w/o a plan	% of statewide total	% of addresses in CUD territories
ADDISON/MAPLE	6126	11.64%	13.46%
CVFIBER	4789	9.10%	10.52%
DVFIBER	6156	11.70%	13.53%
ECFIBER	4734	8.99%	10.40%
LAMOILE	3881	7.37%	8.53%
NEK BROADBAND	10095	19.18%	22.18%
NWCUD	5189	9.86%	11.40%
OTTER CREEK CUD	2658	5.05%	5.84%
SOVT CUD	1887	3.59%	4.15%
ALL CUDS	45515	86.48%	
NON CUD	7115	13.52%	
TOTAL	52630		

ADDITIONAL ADJUSTMENTS

1. CUD Supplemental Grants for service in Concord, Roxbury, Northfield, and Moretown.
2. Charter addresses mistakenly left out of Cambridge's 2019 data

Disclaimers:

- The #'s do not account for any non-state or federally funded projects built in 2020-2021
- The data is self reported by the providers
- FCC does not use E-911 addresses. Those addresses were matched to E-911 data.
- Additional point by point analysis is recommended to ensure “funded” addresses were not double-counted
- Adjusting calculations to include or not include RDOF does not greatly impact % breakdown

New Updated Data will be released by PSD: Late 2021