

A detailed topographic map of a mountainous region, likely in Vermont, showing contour lines, a winding river, and various land features. The map is rendered in shades of green, brown, and tan, with a semi-transparent dark overlay on the right side where the text is placed.

Finding and Using Act 174 Data – 2022 Update

An Introduction

Steve Fugate | steve.fugate@vermont.gov

vcgi.vermont.gov

April 13, 2023

The background of the slide is a topographic map. The top section shows a river valley with green and brown terrain. The bottom section shows a large, light-colored, textured area, possibly a desert or a large body of water, with some winding paths or roads.

Overview

1

**The Open
Geodata Portal**

2

**Type of Act
174 Data**

3

**Access to Act
174 Data**

WHAT VCGI DOES



BUILD

Foundational
Datasets



LEAD

Development and
use of Statewide
Geographic Information
System (GIS) and the
Coordination it requires



EMPOWER

Data access,
visualization and use



The Open Geodata Portal

Background and Introduction

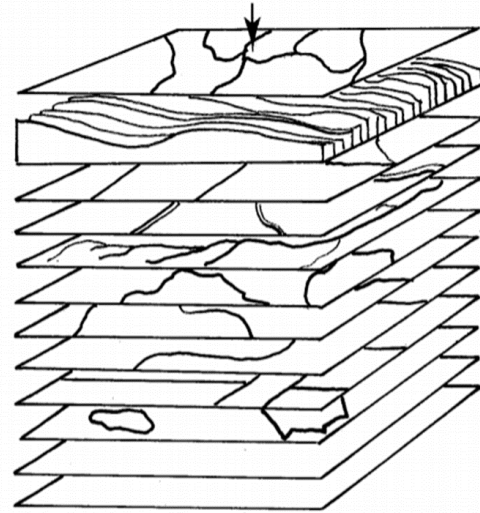


The Creation of the
Vermont State Data Base

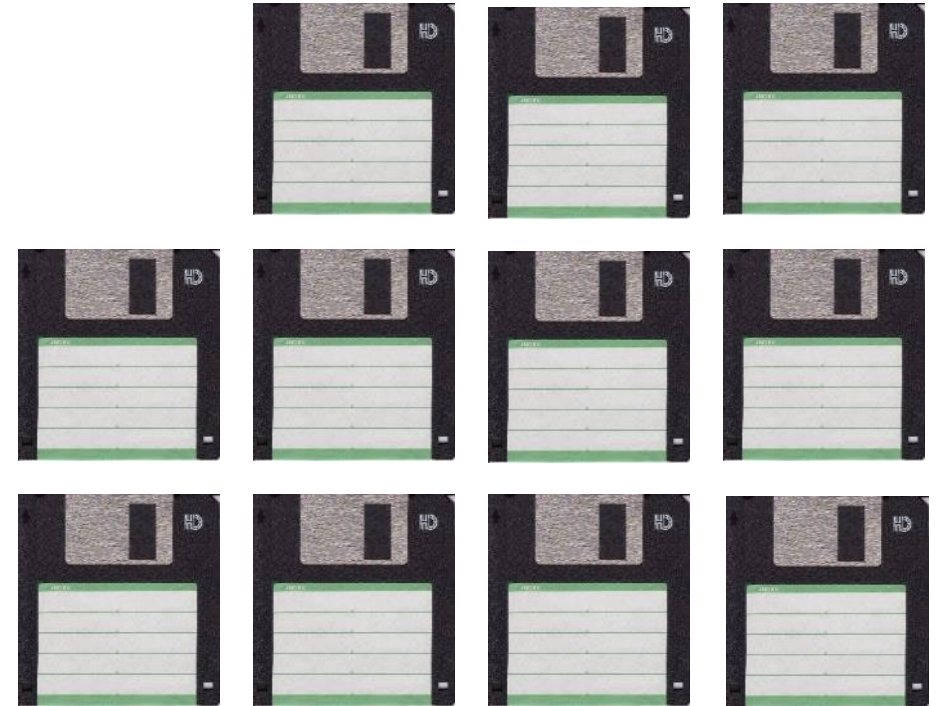
A Program of Work
April 1983

School of Natural Resources
University of Vermont

A GEOGRAPHIC INFORMATION SYSTEM for VERMONT



SOILS
TOPOGRAPHY
slope, aspect, elevation
POLITICAL BOUNDARIES
TRANSPORTATION
STREAM COURSES, WATERSHEDS
LAND COVER/USE
GROUND WATER
GEOLOGY
SOCIO-ECONOMIC FACTORS
HISTORICAL/ARCHAEOLOGY
FUTURE EXPANSION
FUTURE EXPANSION



1983



MB

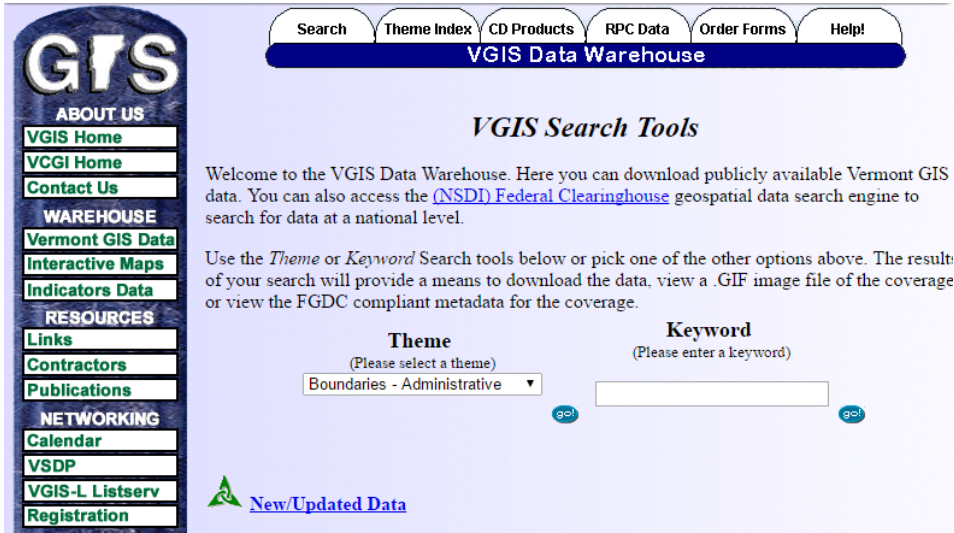
1992

Changing With
Technology

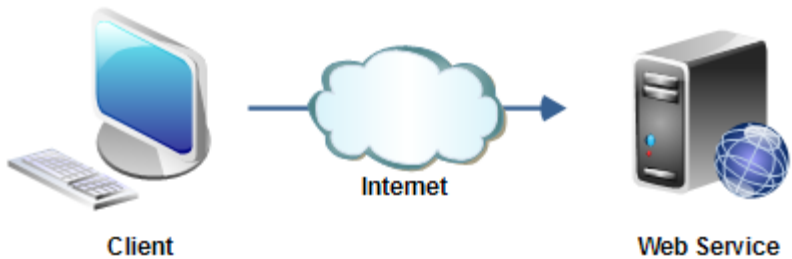
1992



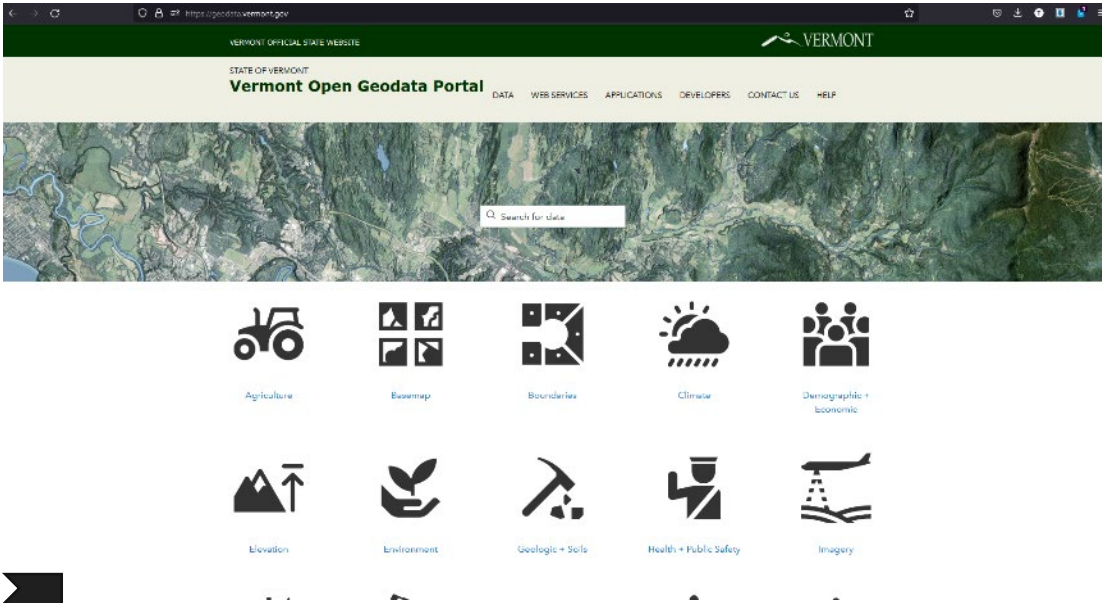
1998



2000s



Late 2017 - Present Day



geodata.vermont.gov

TODAY



APPS

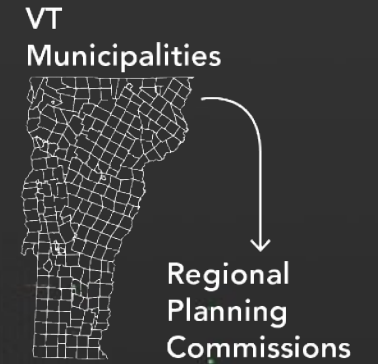


DATA DOWNLOAD

LIKE
NETFLIX
FOR
MAPS

SERVICES

> **17** ~~MB~~ **TB**



State
Agencies

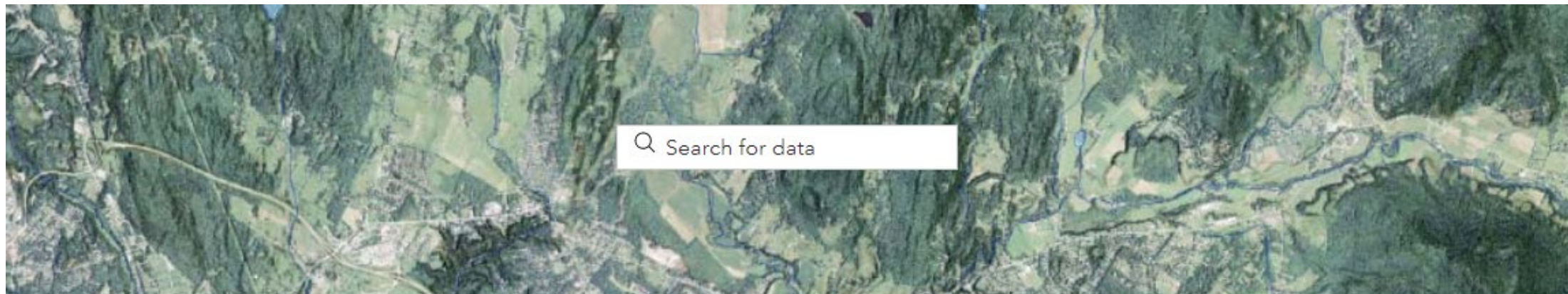


Vermont
Open
Geodata
Portal

 **DATA.GOV**

Photo Credit: Taylor Vick

geodata.vermont.gov



Agriculture



Basemap



Boundaries



Climate



Demographic +
Economic



Type of Act 174 Data

Known & Possible Constraint Data
Renewable Wind & Solar Energy Potential
Rooftop Solar Data



Act 174 Statewide Energy Planning Data Updated: Known and Possible Constraints, Renewable Energy Potential, Rooftop Solar

<https://vcgi.vermont.gov/data-release/act-174-statewide-energy-planning-data-updated-known-and-possible-constraints>

Act 174 2022 GIS Layers

In addition to their display in the Vermont Planning Atlas, the following GIS data layers are available:

Item / Overview	Type	Availability	Service URL	Download
VT Act 174 Ground Mount Solar Potential	Feature Layer	Service, Download	Service	Download
VT Act 174 Wind Potential	Feature Layer	Service, Download	Service	Download
VT Service - Act 174 Constraint Layers - 2022	Feature Layer	Service, Zipped download	Service	See Below
	Web Feature Service (WFS)	Service	Service (WFS)	
VT Service – Vector Tile Layer – Act 174 Known Constraints 2022	Vector Tile	Service, Zipped download	Service (Vector Tile)	Download (.zip)
VT Service – Vector Tile Layer – Act 174 Possible Constraints 2022	Vector Tile	Service, Zipped download	Service (Vector Tile)	Download (.zip)
VT Service – Lidar Rooftop Area Solar Radiation (1m) Cached – WM	Tile Layer	Service, Zipped download	Service	Download (.zip)
VT Data – Rooftop Solar Potential – Act 174 2022	Feature Layer	Service, Download	Service	Download
	Web Feature Service (WFS)	Service	Service (WFS)	
VT Data – Town Rooftop Solar Potential – Act 174 2022	Feature Layer	Service, Download	Service	Download
	Web Feature Service (WFS)	Service	Service (WFS)	

Possible Constraints 2022 Layer Inputs:

- AE/VCE Unconfirmed Vernal Pools
- FEMA Special Flood Hazard Areas
- Agriculturally Important Soils
- Act 250 Agricultural Soil Mitigation Areas
- Deer Wintering Areas
- Hydric Soils
- Conservation Design Layers
 - Interior Forest Blocks - Highest Priority
 - Connectivity Blocks - Highest Priority
 - Physical Landscape Blocks - Highest Priority
 - Surface Water and Riparian Areas - Highest Priority
- Protected Lands

Known Constraints 2022 Layer Inputs:

- Vermont Significant Wetlands Inventory
- VSWI Wetlands Advisory Layer
- AE/VCE Confirmed Vernal Pools
- FEMA Special Flood Hazard Areas – Floodways Only
- DEC River Corridors
- Significant Natural Communities
- Rare, Threatened, Endangered Species
- National Wilderness Areas in VT

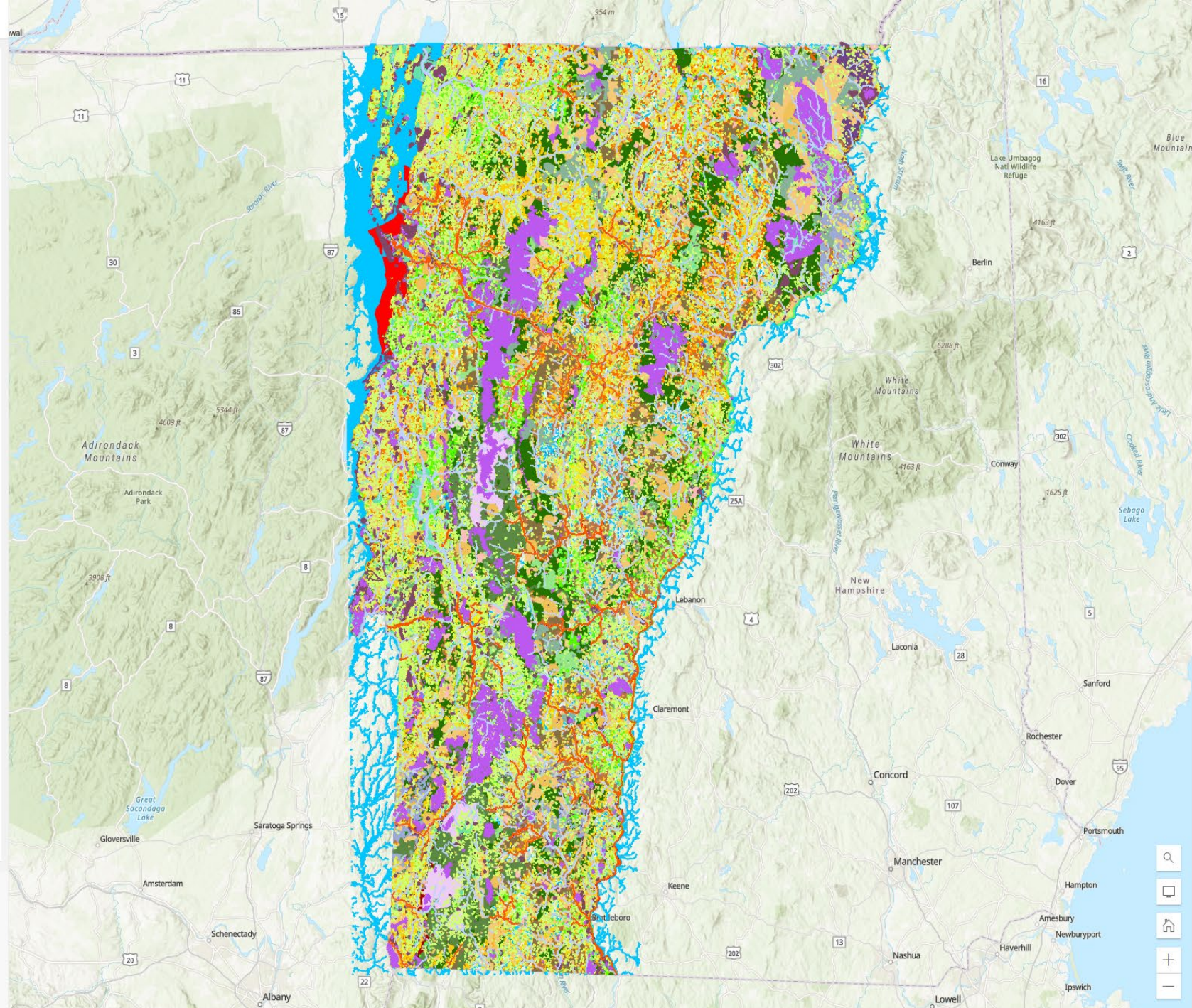
Known and Possible Constraint Data

Item / Overview	Type	Availability	Service URL	Download
<u>VT Service - Act 174 Constraint Layers - 2022</u>	Feature Layer	Service, Zipped download	<u>Service</u>	See Below
	Web Feature Service (WFS)	Service	<u>Service (WFS)</u>	
<u>VT Service – Vector Tile Layer – Act 174 Known Constraints 2022</u>	Vector Tile	Service, Zipped download	<u>Service (Vector Tile)</u>	<u>Download (.zip)</u>
<u>VT Service – Vector Tile Layer – Act 174 Possible Constraints 2022</u>	Vector Tile	Service, Zipped download	<u>Service (Vector Tile)</u>	<u>Download (.zip)</u>

- FS VCGI ACT174CONSTRAINTS SP v2022
- AE VCE Confirmed Vernal Pools
- FEMA Special Flood Hazard Areas - floodways only
- DEC River Corridors
- Significant Natural Communities
- Rare, Threatened, Endangered Species
- Vermont Significant Wetlands Inventory
- VSWI Wetlands Advisory Layer
- National Wilderness Areas in VT
- AE VCE Unconfirmed Vernal Pools
- Conserved State Lands
- Conserved Federal Lands
- Conserved Local Government Lands
- Conserved Non Government Lands
- Agriculturally Important Soils
- FEMA Special Flood Hazard Areas
- Act 250 Agricultural Soil Mitigation areas
- Deer Wintering Areas
- Physical Landscape Blocks - Highest Priority
- Interior Forest Blocks - Highest Priority
- Connectivity Forest Blocks - Highest Priority
- Surface Water - Highest Priority
- HYDRIC Soils

 Add






Properties

Symbology

FS VCGI ACT174CONSTRAINTS SP v2022

AE VCE Confirmed Vernal Pools




FEMA Special Flood Hazard Areas - floodways only





DEC River Corridors




Significant Natural Communities


 Uncategorized


 Palustrine

 Terrestrial

Rare, Threatened, Endangered Species


 Other

 Endangered

 Threatened

Vermont Significant Wetlands Inventory


 Class 1 Wetland

 Class 2 Wetland


VSWI Wetlands Advisory Layer

 Advisory Wetland

National Wilderness Areas in VT



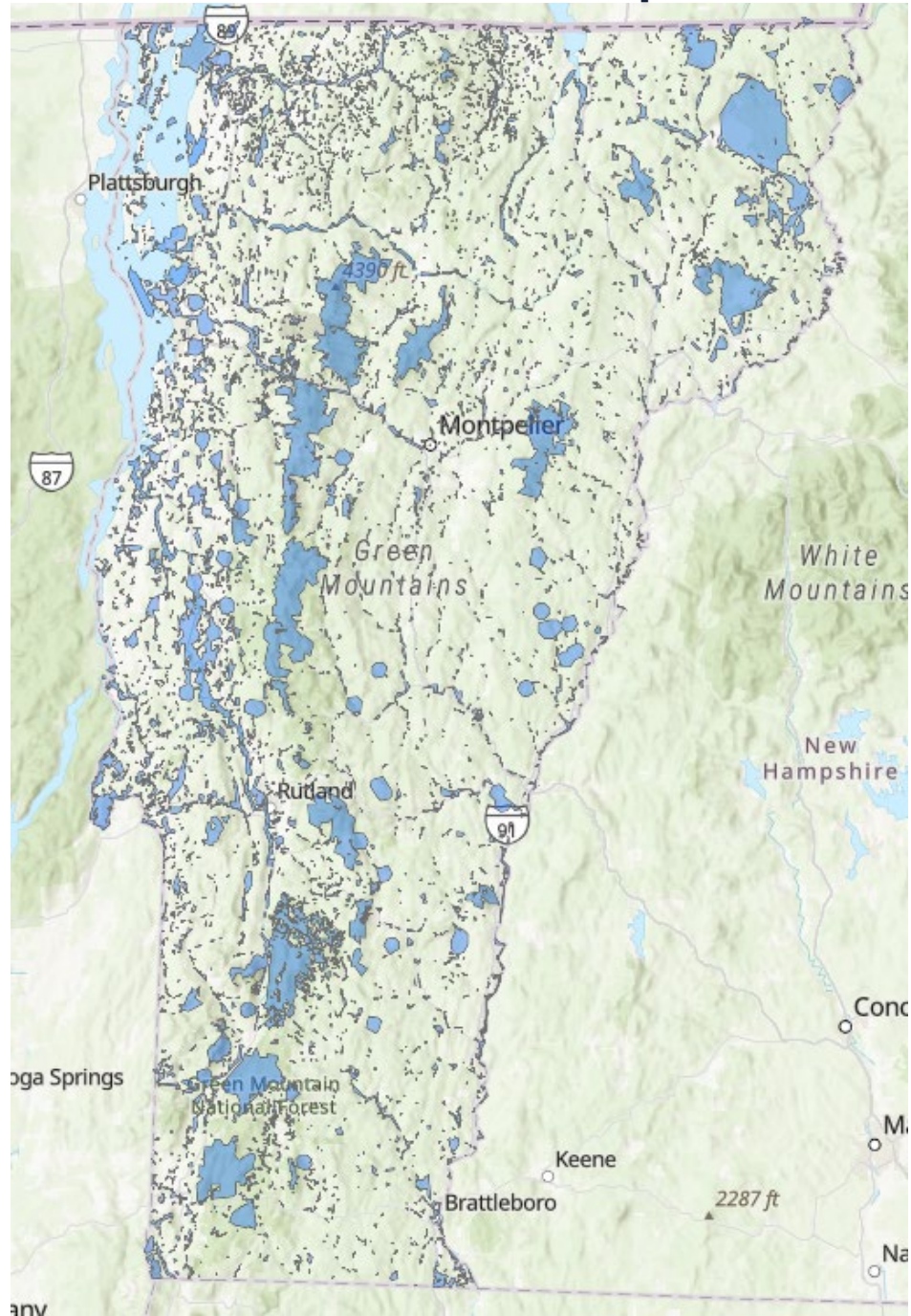
AE VCE Unconfirmed Vernal Pools



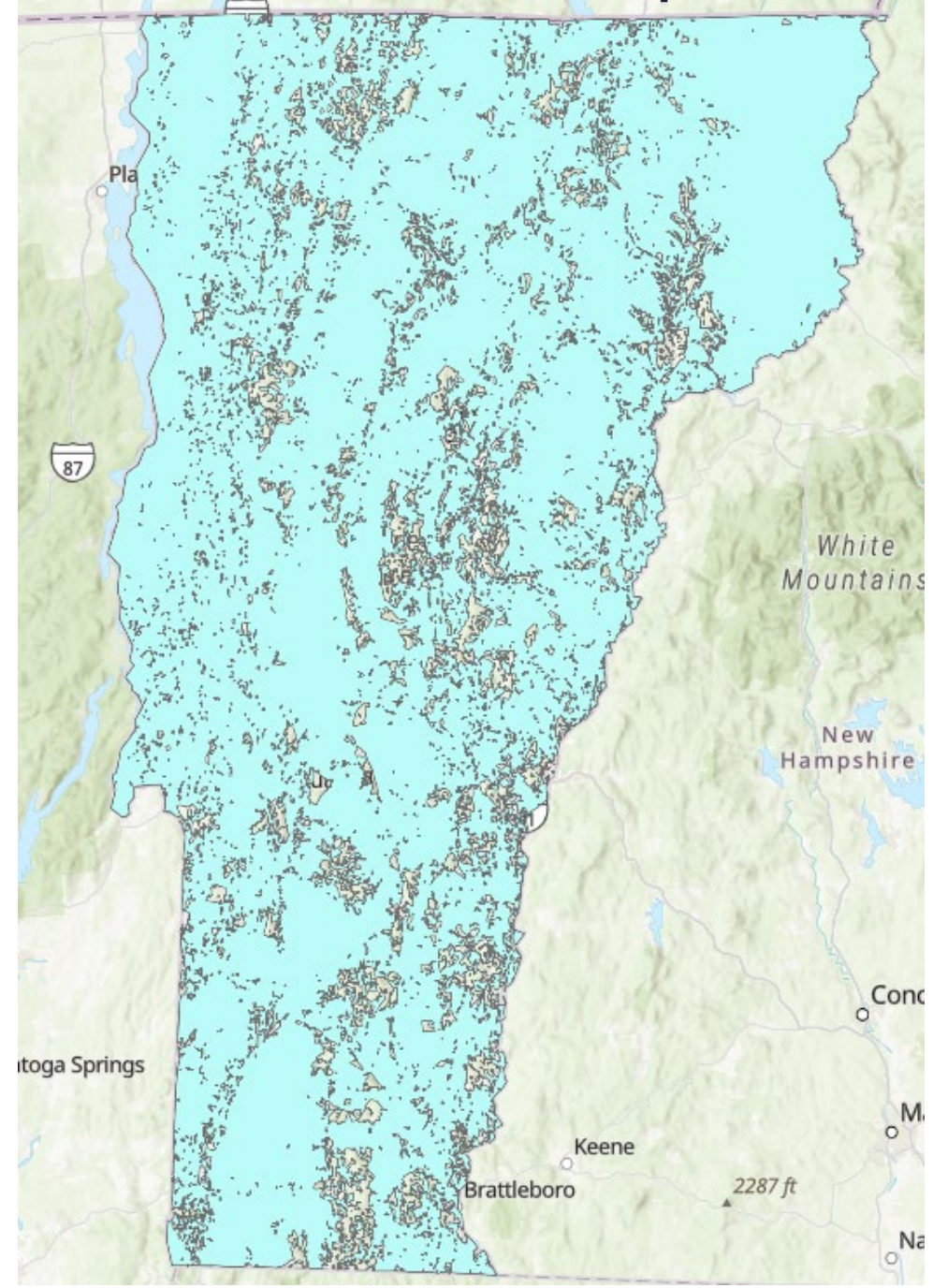
Conserved State Lands

 General

Known Constraints – All Inputs Flat File



Possible Constraints – All Inputs Flat File

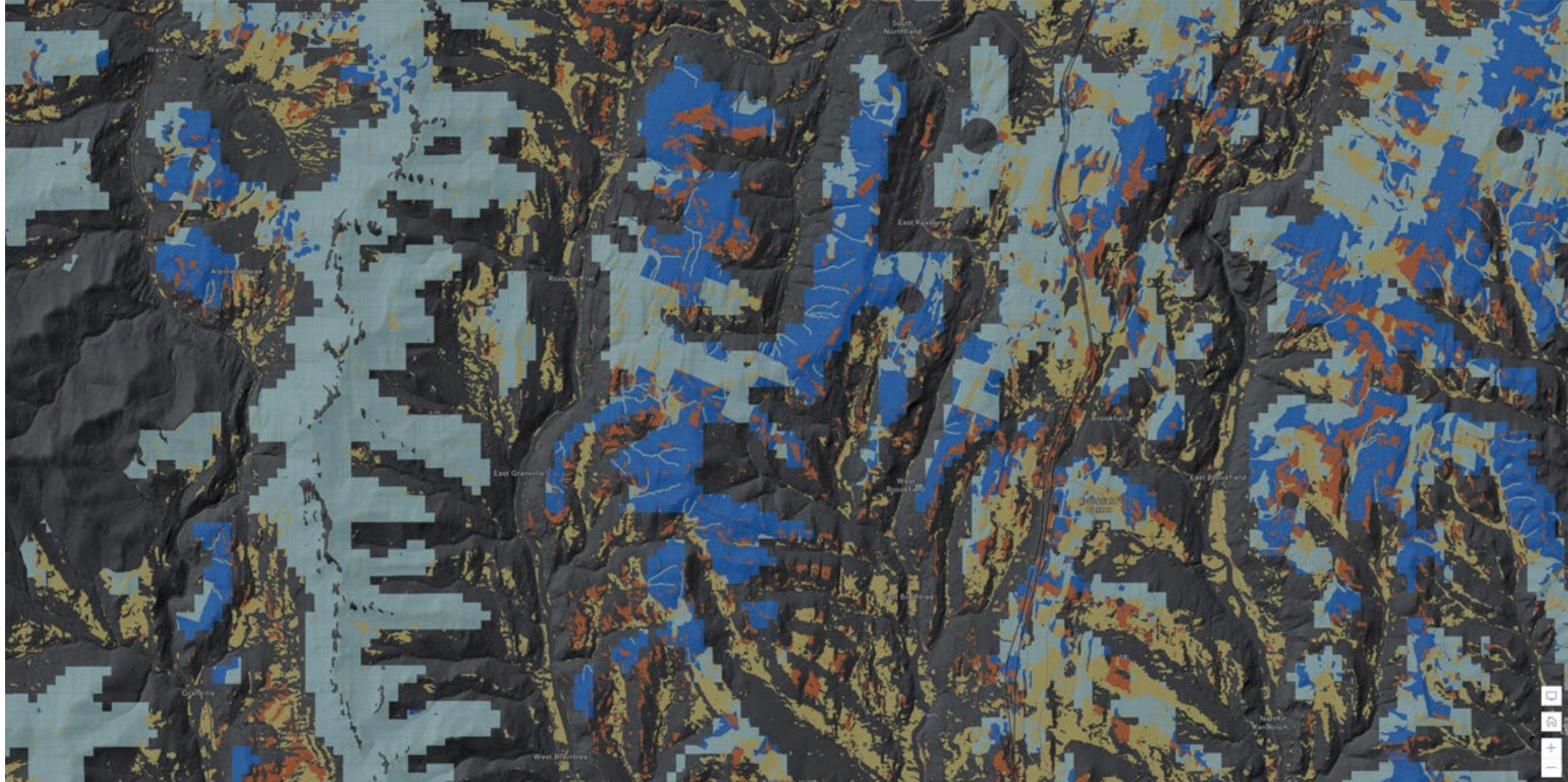


Renewable Energy Potential Data

Item / Overview	Type	Availability	Service URL	Download
VT Act 174 Ground Mount Solar Potential	Feature Layer	Service, Download	Service	Download
VT Act 174 Wind Potential	Feature Layer	Service, Download	Service	Download

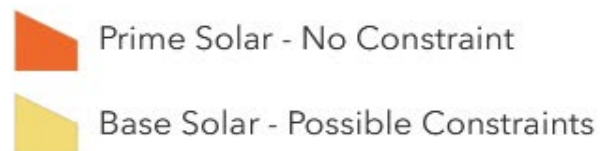
Ground Mount Solar Potential layer comes from the 2010 Renewable Energy Atlas of Vermont (REAVT) effort. This layer was further processed to meet the requirements of Act 174 by removing areas with “known constraints” and to identify areas with “possible constraints” as outlined in the “Act 174 Energy Planning Standards”

Wind Potential layer represents three combined wind resource layers: Potential Residential and Small and Large Commercial Areas. The data was further processed to meet the requirements of Act 174 by removing areas with “known constraints” and to identify areas with “possible constraints” as outlined in the “Act 174 Energy Planning Standards”



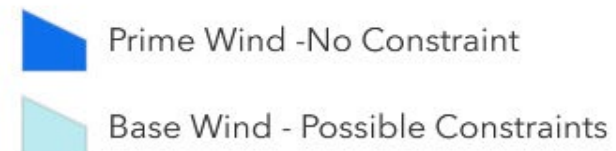
Ground Mount Solar Energy: filtered Resource Potential

Constraint_



Wind Energy: Filtered Resource Potential

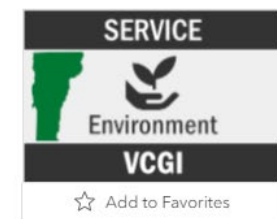
Constraint_



Rooftop Area Solar Radiation Potential Data

Item / Overview	Type	Availability	Service URL	Download
<u>VT Service – Lidar Rooftop Area Solar Radiation (1m) Cached – WM</u>	Tile Layer	Service, Zipped download	<u>Service</u>	<u>Download (.zip)</u>
<u>VT Data – Rooftop Solar Potential – Act 174 2022</u>	Feature Layer	Service, Download	<u>Service</u>	<u>Download</u>
	Web Feature Service (WFS)	Service	<u>Service (WFS)</u>	
<u>VT Data – Town Rooftop Solar Potential – Act 174 2022</u>	Feature Layer	Service, Download	<u>Service</u>	<u>Download</u>
	Web Feature Service (WFS)	Service	<u>Service (WFS)</u>	

Area Solar Radiation Potential of Rooftops



This ASR raster estimates rooftop solar potential for individual structures so they can be aggregated at the municipal level to inform RPCs on rooftop solar potential

Tile layer by [Services_VCGI](#)

Item created: Feb 2, 2023 Item updated: Feb 28, 2023 View count: 25

Description

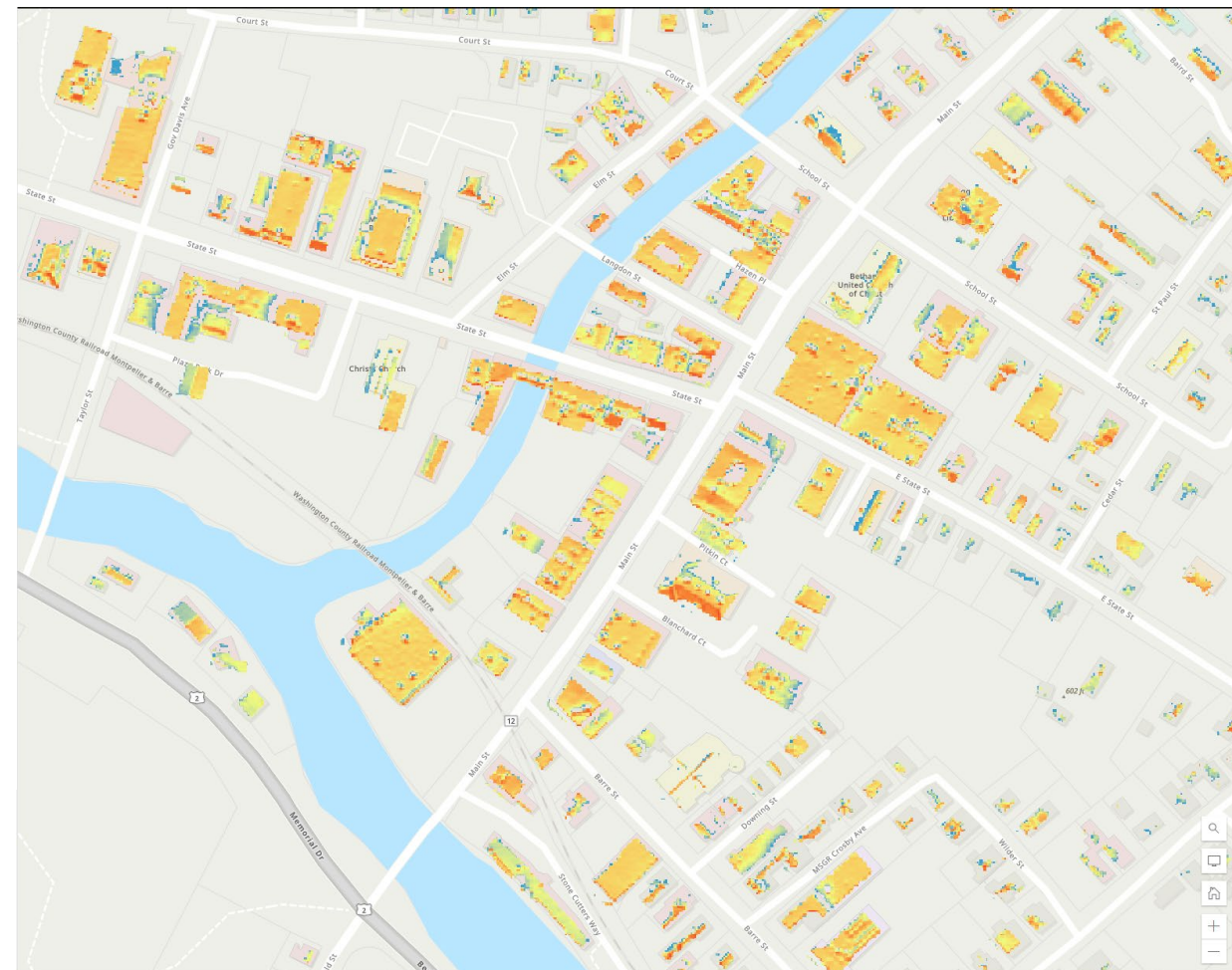
([Link to Metadata](#)) The ESRI Area Solar Radiation tool was run on the statewide nDSM with a mask on lidar derived building footprints. A description of the workflow used to produce this layer can be found at [Estimate solar power potential](#) | [Learn ArcGIS](#). This Tile layer's source data is available as a [TIF-file download](#).

Layers

IMG_VCGI_ROOFTOPSAR_WM_v1.tif

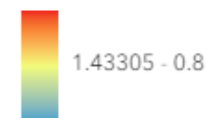
Terms of Use

VCGI and the State of VT make no representations of any kind, including but not limited to the warranties of merchantability or fitness for a particular use, nor are any such warranties to be implied with respect to the data.

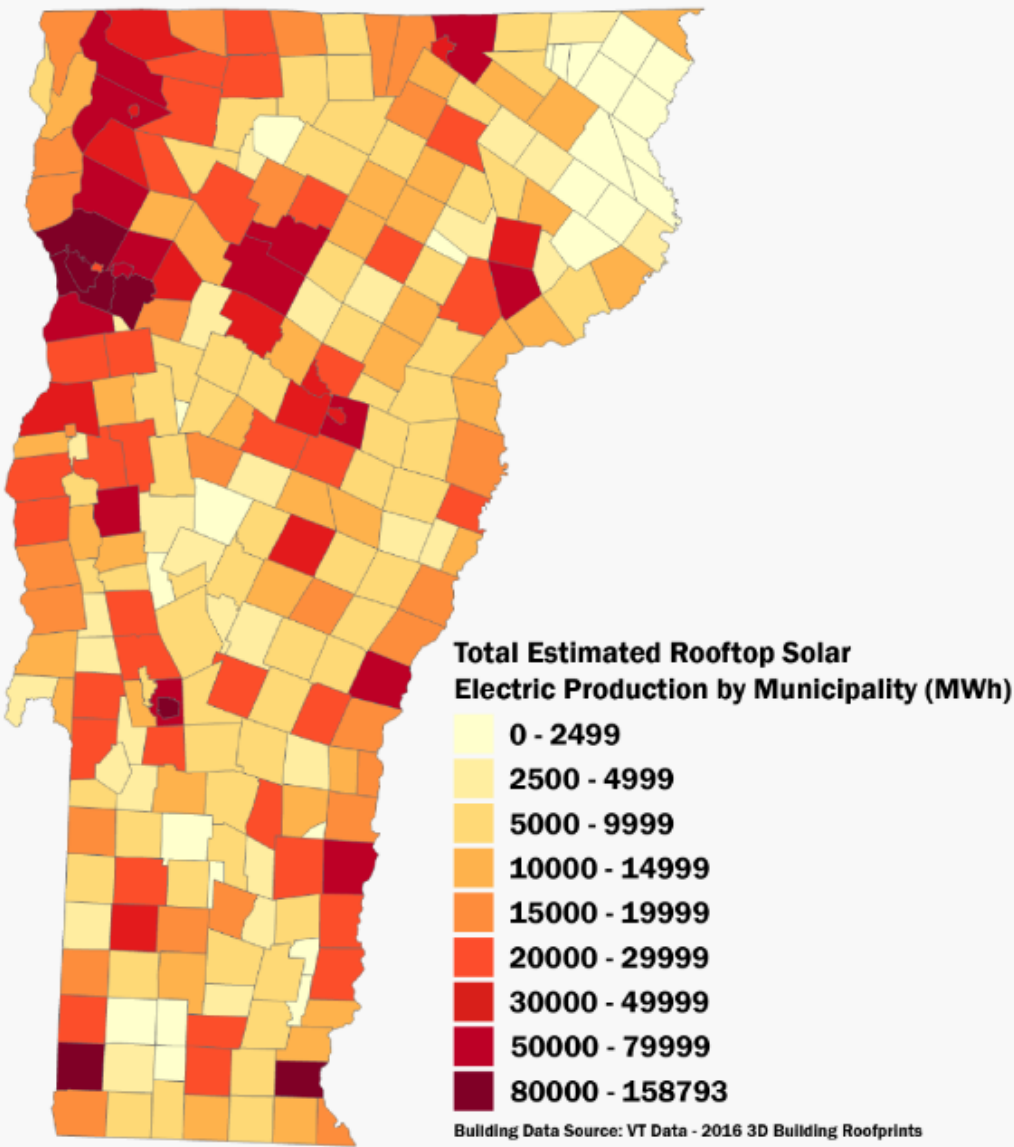


VT Service - Lidar Rooftop Area Solar Radiation (1m),
Cached - WM

IMG_VCGI_ROOFTOPSAR_WM_v1.tif



Town Rooftop Solar Potential



Individual Rooftop Solar Potential





Access to Act 174 Data

[Downloads](#)

[Services](#)

[Vermont Planning Atlas](#)

[Act 174 Data Release Page](#)



geodata.vermont.gov – Search “Act 174”



Agriculture



Basemap



Boundaries



Climate



Demographic +
Economic

All

Data

Documents

Apps & Maps

Filters

Reset

1 - 20 of 44 results

Relevance ▾

Content Type

- ☐
- Feature Layer
-
- ☐
- Document Link
-
- ☐
- Layer Package

Source

- ☐
- VT Center for Geographic Information
-
- ☐
- Vermont Agency of Natural Resources
-
- ☐
- ANR - DEC
-
- ☐
- Natural Resources Board
-
- ☐
- VT Legislative Council

More ▾

Categories

- ☐
- Boundaries
-
- ☐
- Environment
-
- ☐
- Administrative
-
- ☐
- Energy Resources
-
- ☐
- State Administrative

More ▾

License

 Data

VT Act 174 Wind Potential

VT Center for Geographic Information | Opendata_VCGI

(Link to Metadata) 2022 update. The statewide wind potential layer used in the **Act 174** effort represents three combined wind resource layers: Potential Residential and Small and Large...

Type: Feature Layer
Last Updated: November 30, 2022

Rows: 519,503
Tags: isothermeEnviron, subthemeOther, nodeVCGI, dataset...

 Data


VT Act 174 Ground Mount Solar Potential

VT Center for Geographic Information | Opendata_VCGI

(Link to Metadata) 2022 update. The only statewide solar potential layer available used in the **Act 174** effort comes from the 2010 Renewable Energy Atlas of Vermont (REAVT) effort...

Type: Feature Layer
Last Updated: November 30, 2022

Rows: 359,627
Tags: isothermeEnviron, subthemeOther, nodeVCGI, dataset...

 Document

VT Service - Vector Tile Layer - Act 174 Possible Constraints 2022

VT Center for Geographic Information | Opendata_VCGI

VECTOR_VCGI_ACT174POSSIBLECONSTRAINTS_WM_v2022

Type: Document Link
Publish Date: February 27, 2023

Tags: ACT 174, isothermeEnviron, nodeVCGI, itemTypeWeb...

 Data

VT Data - Rooftop Solar Potential - Act 174 2022

VT Center for Geographic Information | Services_VCGI

(Link to Metadata) Shows the solar potential of Vermont rooftops believed to be suitable for solar energy in Megawatt hours. Workflow from <https://learn.arcgis.com/en/projects/estimate-solar-...>

Type: Feature Layer
Last Updated: December 31, 2022

Rows: 258,197
Tags: ACT 174, isothermeEnviron, nodeVCGI, itemTypeWeb...

 Data


VT Data - Town Rooftop Solar Potential - Act 174 2022

VT Center for Geographic Information | Services_VCGI

(Link to Metadata) This hosted feature layer contains summary information on the rooftop solar radiation and electric productivity potential for each town in Vermont. Units are in Megawatt hour...

Type: Feature Layer
Last Updated: January 6, 2023

Rows: 256
Tags: ACT 174, isothermeEnviron, nodeVCGI, itemTypeWeb...

 Document

VT Service - Lidar Rooftop Area Solar Radiation (1m), Cached - WM

VT Center for Geographic Information | Opendata_VCGI

The ESRI Area Solar Radiation tool was run on the statewide nDSM with a mask on lidar derived building footprints. This Tile layer's source data is available as a TIF-file download.

Type: Document Link
Publish Date: February 13, 2023

Tags: ACT 174, isothermeEnviron, nodeVCGI, itemTypeWeb...

 Data

VT Service - Act 174 Constraint Layers - 2022

VT Center for Geographic Information | Services_VCGI

In coordination with Vermont Regional Planning Commissions, The Department of Public Service, the Vermont Center for Geographic Information, and Agency of Natural Resources have created...

Type: Feature Service
Last Updated: April 10, 2023

Tags: isothermeEnviron, subthemeEnvironOther, nodeVCGI,...

 Map

VT Service - Vector Tile Layer - Act 174 Known Constraints 2022

VT Center for Geographic Information | Services_VCGI

Known constraints composite vector tile layer (signals likely, though not absolute, unsuitability for development based on statewide or local regulations or designated critical resources) to include:...

Type: Vector Tile Service
Uploaded: February 28, 2023

Tags: ACT 174, isothermeEnviron, subthemeEnvironOther, n...

STATE OF VERMONT

Vermont Open Geodata Portal

DATA

WEB SERVICES

APPLICATIONS

DEVELOPERS

CONTACT US

HELP

**VT Service - Act 174 Constraint Layers - 2022**

Services VCGI

VT Center for Geographic Information

**Data****Summary**

This web layer contains all of the known and possible Act174 Constraint Layers.

In coordination with Vermont Regional Planning Commissions, The Department of Public Service, the Vermont Center for Geographic Information, and Agency of Natural Resources have created these layers that represent the best available known and possible constraints detailed in the Act 174 Energy Planning Mapping Standards for Municipal Plans. The following layers are snapshots in time and represent the best available information as of July 2022.

Known Constraints are available as a [downloadable .zip](#).

Possible Constraints are available as a [downloadable .zip](#).

Details**Map**

Feature Service

**April 10, 2023**

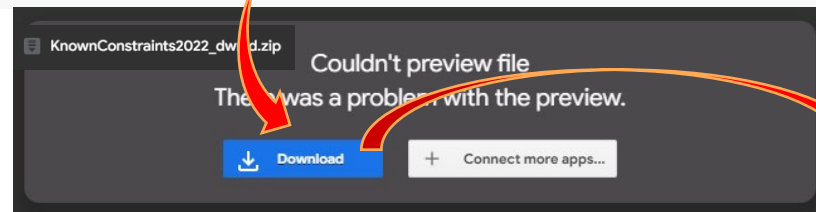
Date Updated

**January 9, 2023**

Published Date

**Public**

Anyone can see this content

**Custom License**[View license details](#)

Google Drive can't scan this file for viruses.

[KnownConstraints2022_dwnld.zip](#) (122M) is too large for Google to scan for viruses. Would you still like to download this file?

[Download anyway](#)

VT Service - Vector Tile Layer - Act 174 Possible Constraints 2022







 Opendata VCGI
VT Center for Geographic Information


Summary

VECTOR_VCGI_ACT174POSSIBLECONSTRAINTS_WM_v2022

[View Full Details](#)

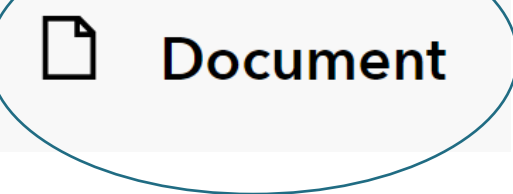
Details

-  **Web Link**
Document Link
-  **February 27, 2023**
Date Updated
-  **February 27, 2023**
Published Date
-  **99 B**
Document file size
-  **Public**
Anyone can see this content
-  **Custom License**
[View license details](#)

 Published using Google Docs

VECTOR_VCGI_ACT174POSSIBLECONSTRAINTS_WM_v2022

[Access the Vector Tile Layer.](#)



Redirect Notice

The previous page is sending you to <https://www.arcgis.com/home/item.html?id=eeccf756ed4e4868a661779ec959603a>.
If you do not want to visit that page, you can [return to the previous page](#).

VT Service - Vector Tile Layer - Act 174 Known Constraints 2022



Services VCGI

VT Center for Geographic Information

Summary

VECTOR_VCGI_ACT174KNOWNCONSTRAINTS_WM_v2022

[View Full Details](#)

Details

**Developer**

Vector Tile Service

**February 28, 2023**

Date Updated

**December 1, 2022**

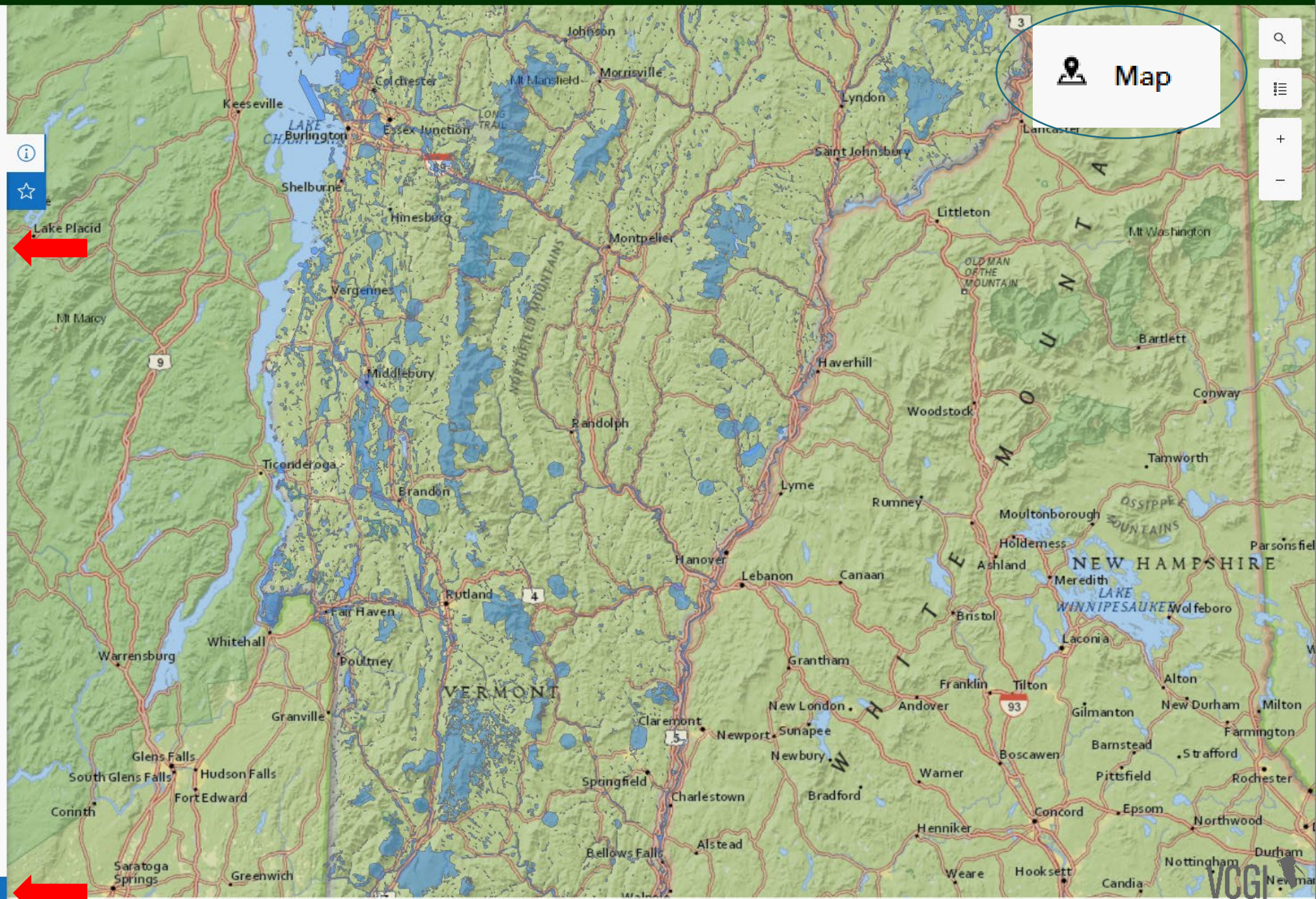
Published Date

**Public**

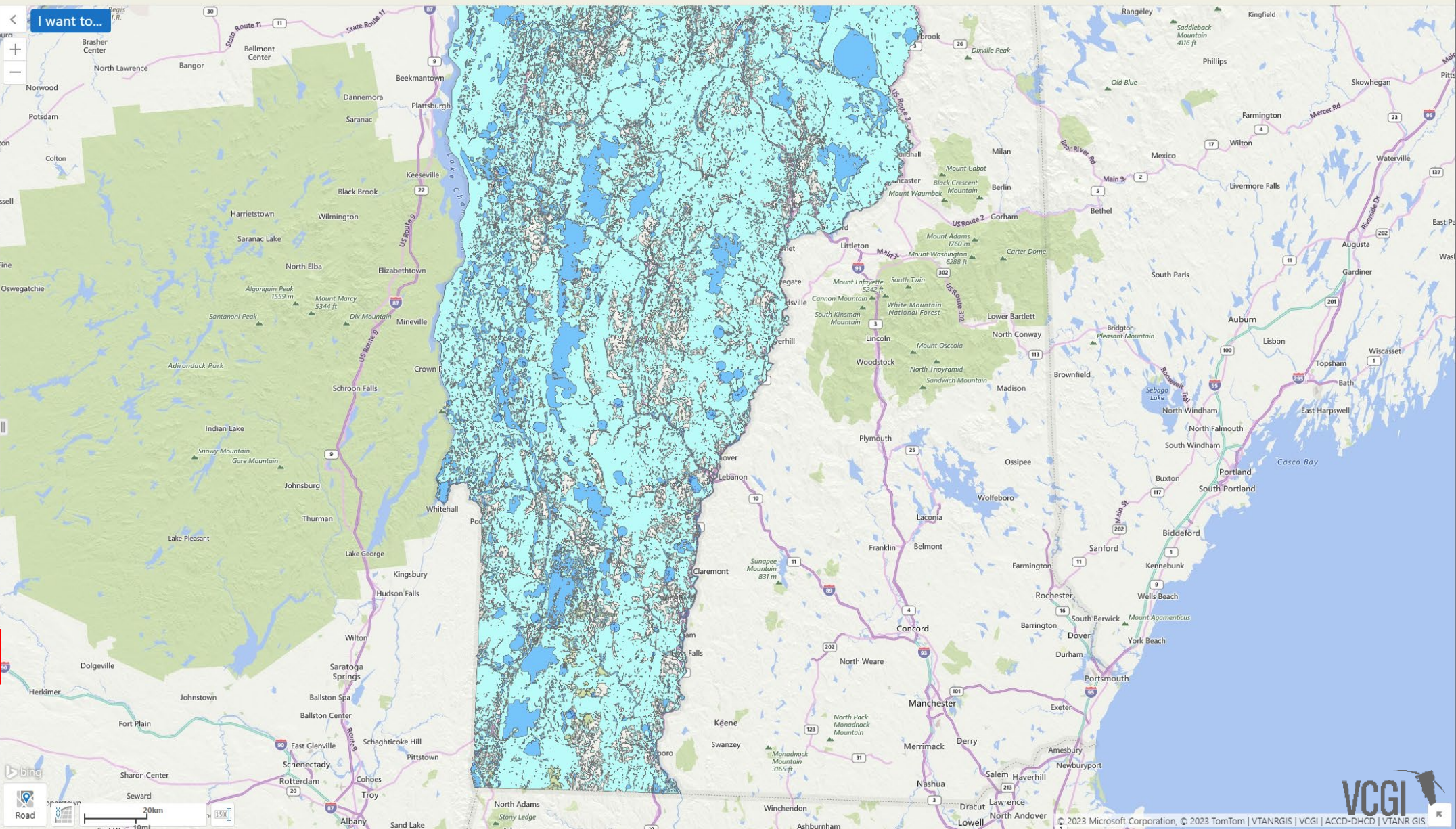
Anyone can see this content

**Custom License**[View license details](#)

I want to use this



Vermont Planning Atlas – Act 174 Theme



Vermont Planning Atlas – Default View

PLANNING ATLAS
Department of Housing and Community Development

Theme **Tools** Measure Draw Links

Initial View Identify Print Export Layer Catalog Share Layer List **Upload Data** Filter Google Street View Query ACCD Disclaimer

Search...

Layers

Act 174 - Energy Planning

Filter Layers...

+ ☒ Act 174 - Energy Planning

+ ☒ Basemaps

Add Data To Map

Choose files to upload from your computer, and they will become temporarily available on the map.

Supported file types include: .csv, .xlsx, .kml, .shp, .gpx, or a .zip containing a FileGDB or shapefiles

Note: Large or complex spatial data may impact browser performance.

Choose Files No file chosen

Upload Cancel

Map showing Vermont with various layers and a red arrow pointing to the 'Upload Data' button.

VCGI

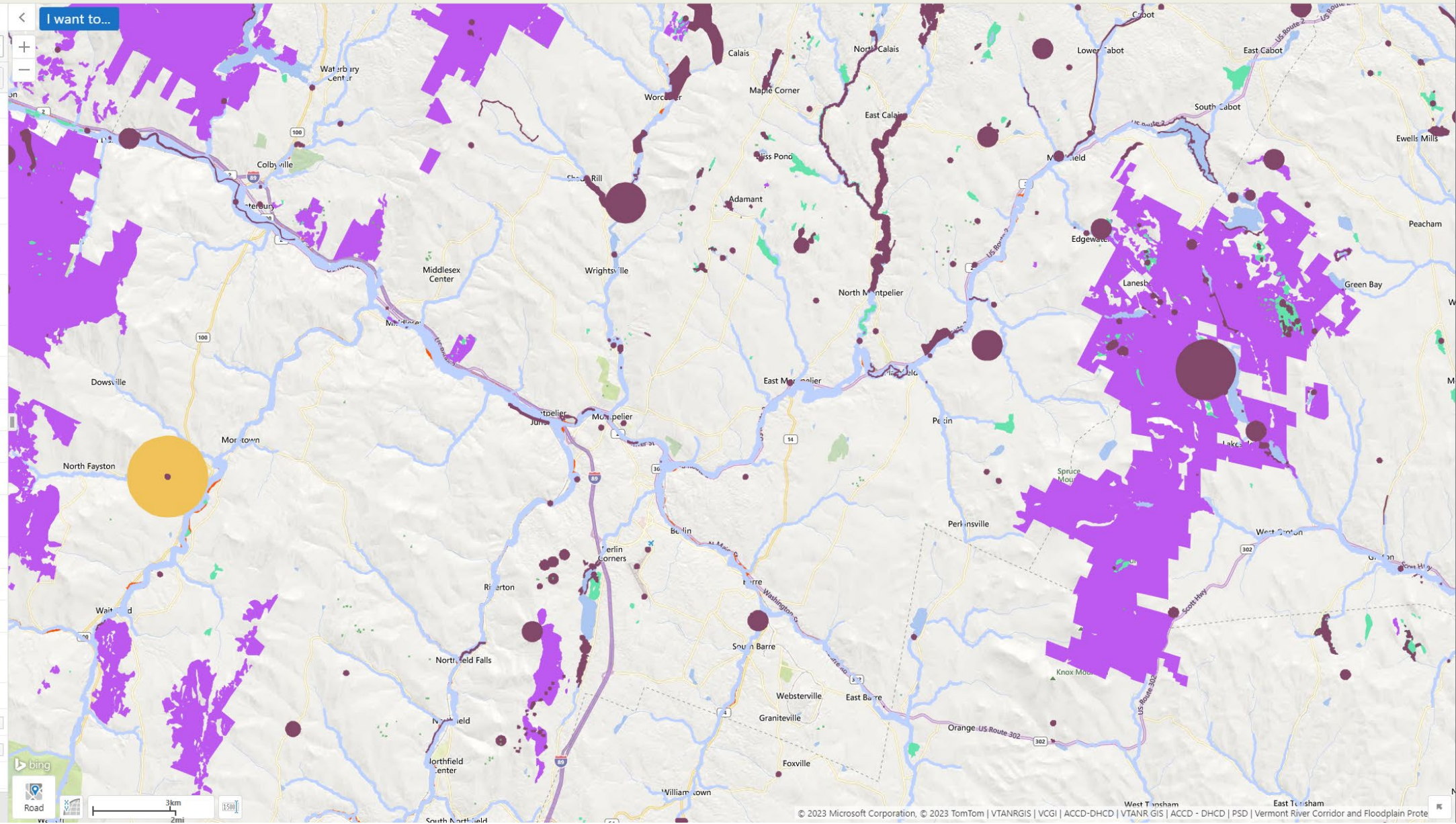
Known Constraint Input Layers

Layers

Act 174 - Energy Planning

Filter Layers...

- ☒ Act 174 - Energy Planning
- ☐ Renewable Energy Potential 2022
- ☒ Act 174 - Constraint Layers 2022
- ☒ Known Constraints 2022
- ☒ Wetlands
 - ☒ AE/VCE Confirmed
 - ☒ Vernal Pools
 - ☒ FEMA Special Flood
 - ☒ Hazard Areas - floodways only
 - ☒ DEC River Corridors
 - ☒ Significant Natural Communities
 - Uncategorized
 - Palustrine
 - Terrestrial
 - ☒ Rare, Threatened, Endangered Species
 - Other
 - Endangered
 - Threatened
 - ☒ National Wilderness
- ☒ Areas in VT
- ☒ Possible Constraints 2022
 - ☐ Act 174 - Known Constraints 2022
 - ☐ Act 174 - Possible Constraints 2022
- ☒ Basemaps



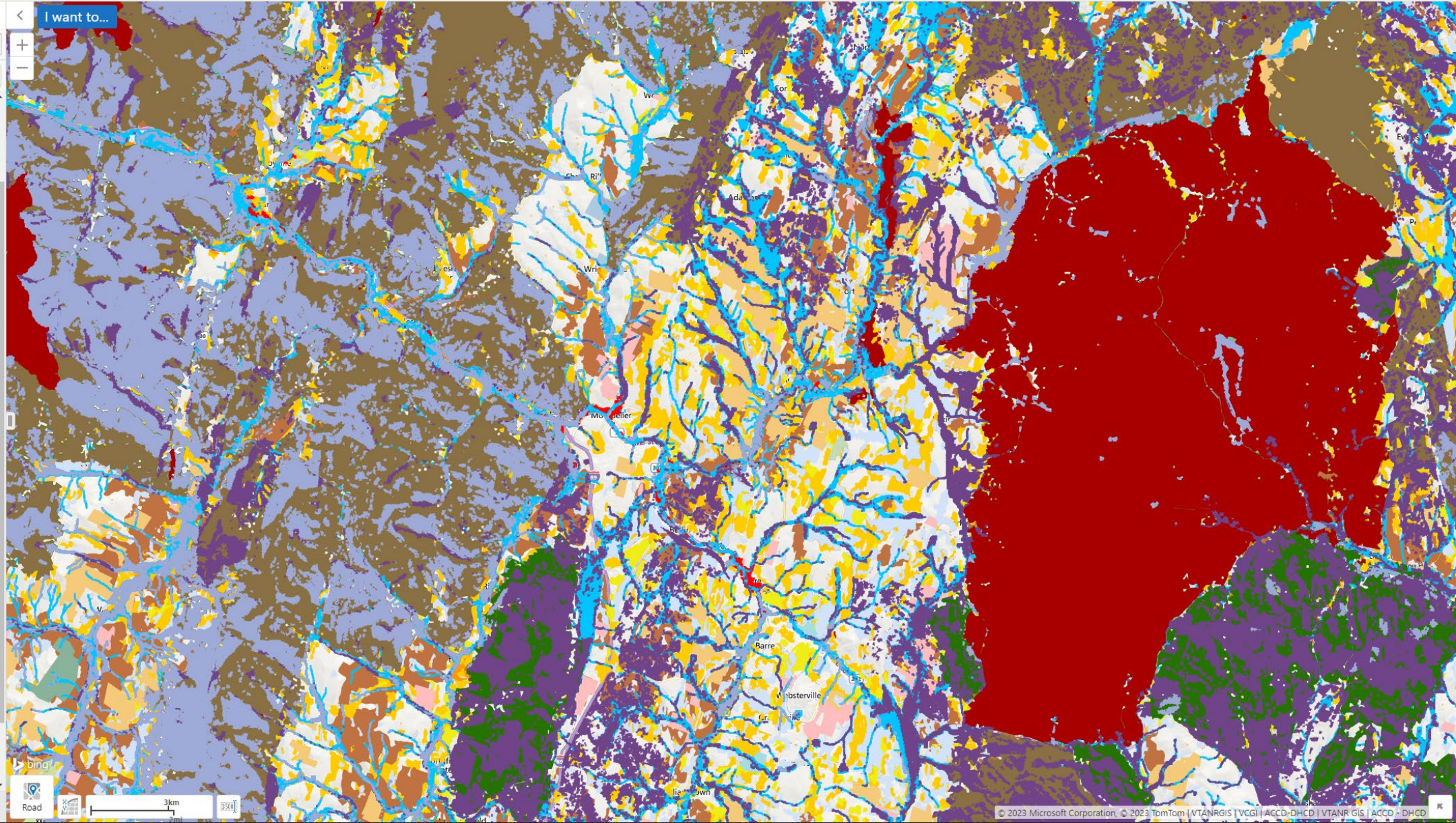
Possible Constraint Input Layers

Layers

Act 174 - Energy Planning

Filter Layers...

- ☒ Possible Constraints 2022
 - ☒ AE/VCE Unconfirmed
 - Vernal Pools
 - ☒ FEMA Special Flood
 - Hazard Areas
 - ☒ Agriculturally Important Soils
 - ☒ Act 250 Agricultural
 - Soil Mitigation areas
 - ☒ Deer Wintering Areas
 - ☒ Hydric Soils
- ☒ Conservation Design Layers
 - ☒ Physical Landscape
 - Blocks - Highest Priority
 - ☒ Interior Forest
 - Blocks - Highest Priority
 - ☒ Connectivity Forest
 - Blocks - Highest Priority
 - ☒ Surface Water - Highest Priority
- ☒ Protected Lands
 - ☒ Conserved Federal Lands
 - ☒ Conserved State Lands
 - ☒ Conserved Local Government Lands
 - ☒ Conserved Non Government Lands



Renewable Wind and Solar Energy Potential Layers



Layers



I want to...

Act 174 - Energy Planning

Filter Layers...

Filter

☒ Act 174 - Energy Planning

☒ Renewable Energy Potential 2022

☒ Wind Energy: Filtered

Resource Potential

☒ No Constraint - Prime Wind

☒ Possible Constraints - Base Wind

☒ Green Mountain Solar

Energy: Filtered Resource Potential

☒ No Constraint - Prime Solar

☒ Possible Constraints - Base Solar

☐ Lidar Rooftop Area Solar Radiation

☐ Rooftop Solar Potential

☐ Town Rooftop Solar Potential

☐ Act 174 - Constraint Layers 2022

☐ Known Constraints 2022

☐ Wetlands

☐ AE/VCE Confirmed Vernal Pools

☐ FEMA Special Flood Hazard Areas - floodways only

☐ DEC River Corridors

☐ Significant Natural Communities

☐ Rare, Threatened, Endangered Species

☐ National Wilderness Areas in VT

☐ Possible Constraints 2022

☐ Act 174 - Known Constraints 2022

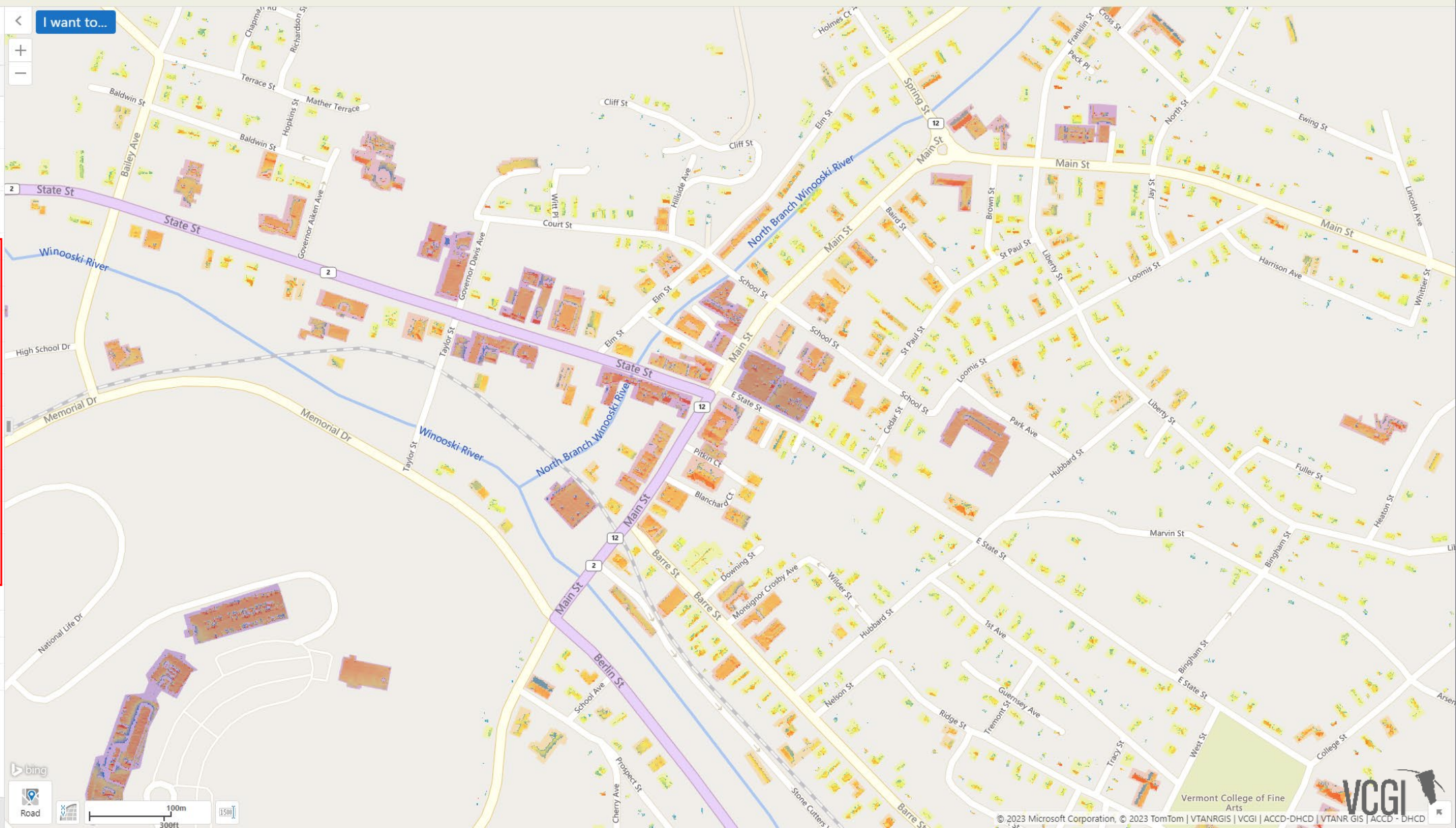
Town and Rooftop Area Solar Radiation Layers

Layers

Act 174 - Energy Planning

Filter Layers...

- ☒ Act 174 - Energy Planning
 - ☒ Renewable Energy Potential 2022
 - ☐ Wind Energy: Filtered Resource Potential
 - ☐ Green Mountain Solar Energy: Filtered Resource Potential
 - ☒ Lidar Rooftop Area Solar Radiation
 - ☒ Rooftop Solar Potential
 - Electric Productivity (MWh)
 - 3.52 - 16.68
 - 16.69 - 45.16
 - 45.17 - 105.07
 - 105.08 - 219.42
 - 219.43 - 397.38
 - 397.39 - 933.89
 - 933.90 - 1681.01
 - ☒ Town Rooftop Solar Potential
 - ☐ Act 174 - Constraint Layers 2022
 - ☐ Act 174 - Known Constraints 2022
 - ☐ Act 174 - Possible Constraints 2022
 - ☒ Basemaps



Accessing Rooftop Solar Data Attributes

PLANNING ATLAS
Department of Housing and Community Development

Theme Tools Measure Draw Links

Planning Atlas Act174 - Planning Resources

Layers

Act 174 - Energy Planning

Filter Layers...

Filter

☒ Act 174 - Energy Planning

☒ Renewable Energy Potential 2022

☐ Wind Energy: Filtered Resource Potential

☐ Green Mountain Solar Energy: Filtered Resource Potential

☐ Lidar Rooftop Area Solar Radiation

☒ Rooftop Solar Potential

Electric Productivity (MWh)

3.52 - 16.68

16.69 - 45.16

45.17 - 105.07

105.08 - 219.42

219.43 - 397.38

397.39 - 933.89

933.90 - 1681.01

☐ Town Rooftop Solar Potential

I want to...

☆ MONTPELIER

[View Additional Details](#)

[Add to Results](#)

PLANNING ATLAS
Department of Housing and Community Development

Theme Tools Measure Draw Links

Planning Atlas Act174 - Planning Resources

MONTPELIER

I want to...

Details

OBJECTID

214637

Class

5

Shape_Leng

318.1406

Joinid

214636

BuildingHe

18.5

ShapeStAre

2845.5012

ShapeSTLen

318.1406

Shape_Le_1

318.1406

OBJECTID_2

214637

COUNT

1185

AREA (sqm)

1185

MEAN (MWh)

1.0176

Solar Potential (MWh)

1205.9086

Electric Productivity (MWh)

165.933

TOWNNAME

MONTPELIER

Shape_Area

2845.5012

Shape_Length

318.1406

Accessing Rooftop Solar Attributes Aggregated by Town

PLANNING ATLAS
Department of Housing and Community Development

Theme Tools Measure Draw Links

Planning Atlas Act174 - Planning Resources

Layers

Act 174 - Energy Planning

Filter Layers...

Act 174 - Energy Planning

Renewable Energy Potential 2022

Wind Energy: Filtered Resource Potential

Green Mountain Solar Energy: Filtered Resource Potential

Lidar Rooftop Area Solar Radiation

Rooftop Solar Potential

Town Rooftop Solar Potential

Act 174 - Constraint Layers 2022

Act 174 - Known Constraints 2022

Act 174 - Possible Constraints 2022

Basemaps

I want to...

☆ MONTPELIER

View Additional Details Add to Results

PLANNING ATLAS
Department of Housing and Community Development

Theme Tools Measure Draw Links

Planning Atlas Act174 - Planning Resources

MONTPELIER

I want to...

Details

FID 93

FIPS6 23055

TOWNNAME MONTPELIER

TOWNNAMEMC Montpelier

CNTY 23

TOWNGEOID 5002346000

Shape_Leng 27780.0068

Number of Roofs 2144

SUM Roof Area (sqm) 296433

AVG Roof Area (sqm) 138.262

SUM Roof ASR (MWh) 311363

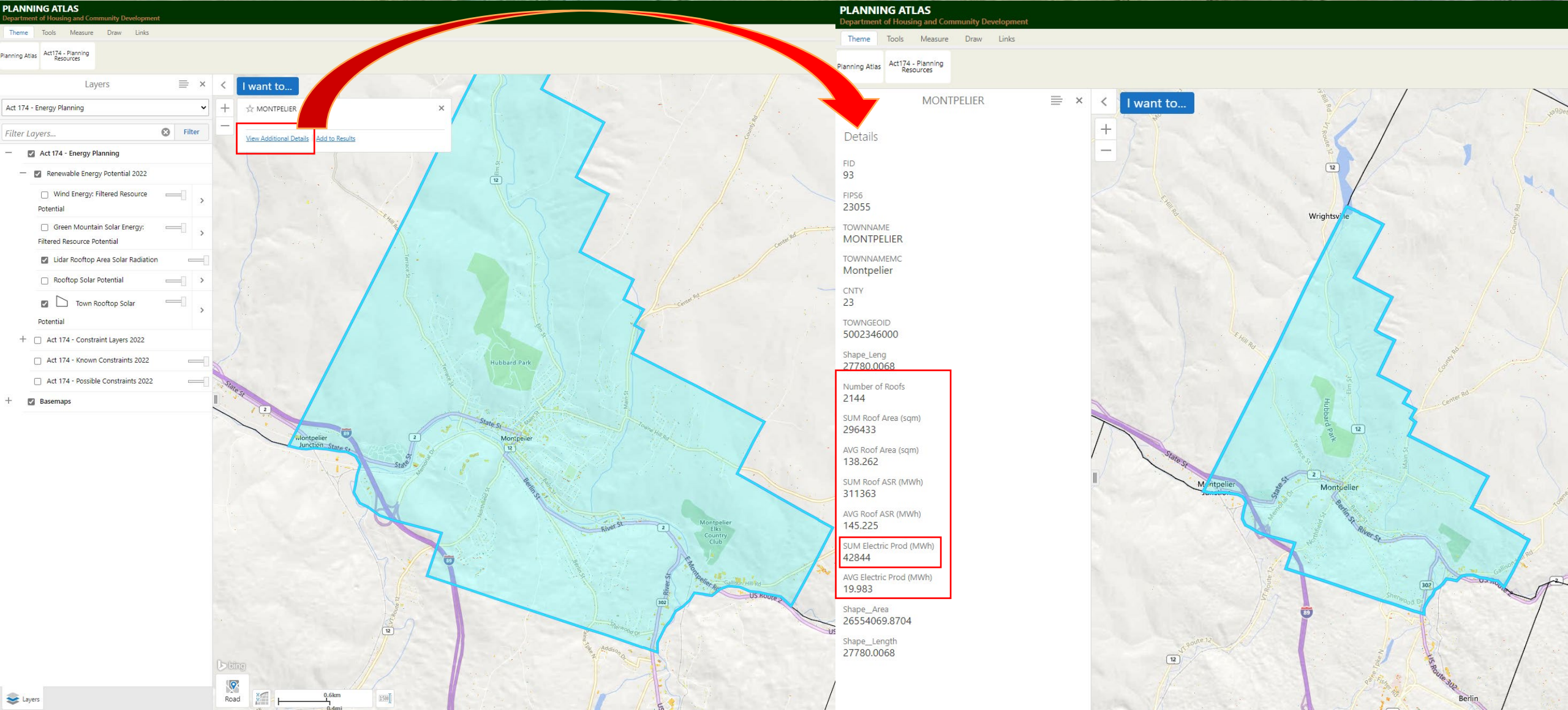
AVG Roof ASR (MWh) 145.225

SUM Electric Prod (MWh) 42844

AVG Electric Prod (MWh) 19.983

Shape_Area 26554069.8704

Shape_Length 27780.0068



Attribute	Value
FID	93
FIPS6	23055
TOWNNAME	MONTPELIER
TOWNNAMEMC	Montpelier
CNTY	23
TOWNGEOID	5002346000
Shape_Leng	27780.0068
Number of Roofs	2144
SUM Roof Area (sqm)	296433
AVG Roof Area (sqm)	138.262
SUM Roof ASR (MWh)	311363
AVG Roof ASR (MWh)	145.225
SUM Electric Prod (MWh)	42844
AVG Electric Prod (MWh)	19.983
Shape_Area	26554069.8704
Shape_Length	27780.0068

Vermont Planning Atlas - Additional Thoughts

- The Planning Atlas is a viewer used for sharing GIS information.
 - Not really for data creation
 - Or cartography
 - Or geoprocessing/analysis
 - Or data management...
- The Act 174 theme of The Planning Atlas was designed to improve the equity of access to GIS solutions by RPCs who are engaging in this work.
- Constructive feedback is encouraged! What is it missing?

Raw Data Products

[Act 174 Statewide Energy Planning Data Updated: Known and Possible Constraints, Renewable Energy Potential | Vermont Center for Geographic Information](#)

An Official Vermont Government Website

Agency of Digital Services
Vermont Center for Geographic Information

DATA RELEASE

Act 174 Statewide Energy Planning Data Updated: Known and Possible Constraints, Renewable Energy Potential

Fri, 03/10/2023 - 12:00

Ground Mount Solar Energy: filtered Resource Potential

Constraint_

- Prime Solar - No Constraint
- Base Solar - Possible Constraints

Wind Energy: Filtered Resource Potential

Constraint_

- Prime Wind -No Constraint
- Base Wind - Possible Constraints

VT Act 174 Ground Mount Solar Potential	Feature Layer	Service, Download	Service	Download
VT Act 174 Wind Potential	Feature Layer	Service, Download	Service	Download
VT Service - Act 174 Constraint Layers - 2022	Feature Layer	Service, Zipped download	Service	See Below
	Web Feature Service (WFS)	Service	Service (WFS)	
VT Service – Vector Tile Layer – Act 174 Known Constraints 2022	Vector Tile	Service, Zipped download	Service (Vector Tile)	Download (.zip)
VT Service – Vector Tile Layer – Act 174 Possible Constraints 2022	Vector Tile	Service, Zipped download	Service (Vector Tile)	Download (.zip)
VT Service – Lidar Rooftop Area Solar Radiation (1m) Cached – WM	Tile Layer	Service, Zipped download	Service	Download (.zip)
VT Data – Rooftop Solar Potential – Act 174 2022	Feature Layer	Service, Download	Service	Download
	Web Feature Service (WFS)	Service	Service (WFS)	
VT Data – Town Rooftop Solar Potential – Act 174 2022	Feature Layer	Service, Download	Service	Download
	Web Feature Service (WFS)	Service	Service (WFS)	

Linked Resources

- [Act 174 Statewide Energy Planning Data Updated: Known and Possible Constraints, Renewable Energy Potential | Vermont Center for Geographic Information](#)
- [Search for 'act 174' | Vermont Open Geodata Portal Your source for geospatial data\(Raw Data Access\)](#)
- [Geocortex Viewer for HTML5 \(vermont.gov\)](#)
- [ANR Natural Resources Atlas](#)
- [Vermont Lidar Program](#)
- [VCGI News and Announcements \(e.g., new data release notice\)](#)
- [Learning Resources](#)
- [Estimate solar power potential | Learn ArcGIS](#)
- [Project Sunroof - Data Explorer](#)
- [Green Power Equivalency Calculator - Calculations and References | US EPA](#)

A detailed topographic map of a mountainous region, likely in Vermont, showing contour lines, a winding river, and various land features. The map is rendered in shades of green, brown, and tan, with a semi-transparent dark overlay on the right side where the text is placed.

Finding and Using Act 174 Data – 2022 Update

An Introduction

Steve Fugate | steve.fugate@vermont.gov
vcgi.vermont.gov

April 13th, 2023