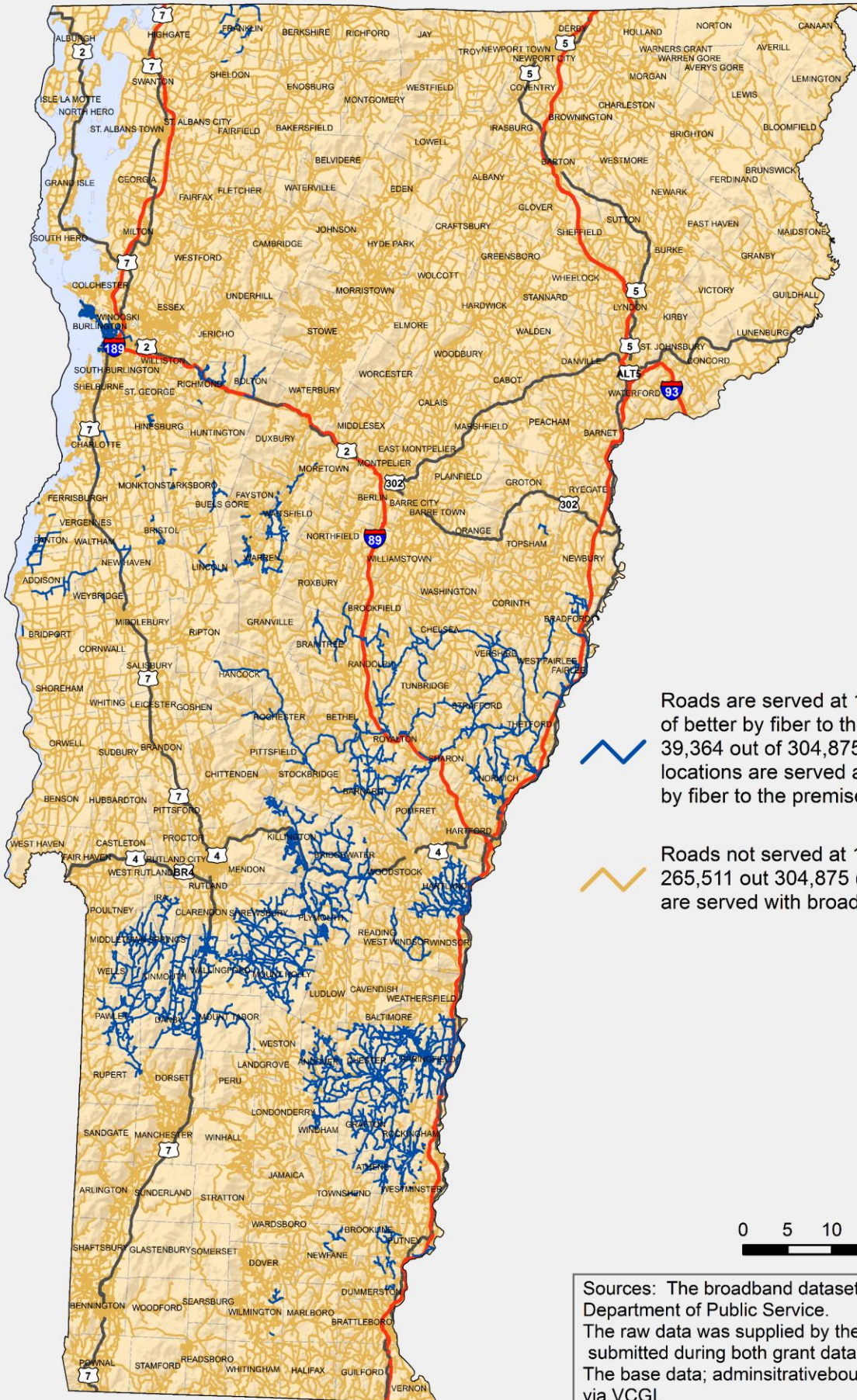




Broadband Availability by Road Segment

100 Mbps Down / 100 Mbps Up or Better



 Roads are served at 100/100 Mbps of better by fiber to the premises or cable. 39,364 out of 304,875 (12.9%) building locations are served at 100/100 Mbps or better by fiber to the premises or cable.

 Roads not served at 100/100 Mbps or better. 265,511 out 304,875 (87.1%) building locations are served with broadband less than 100/100.

0 5 10 20
Miles

Sources: The broadband dataset was developed by the Vermont Department of Public Service. The raw data was supplied by the service providers based on data submitted during both grant data contest periods in 2016. The base data; administrative boundaries, roads supplied via VCGI.