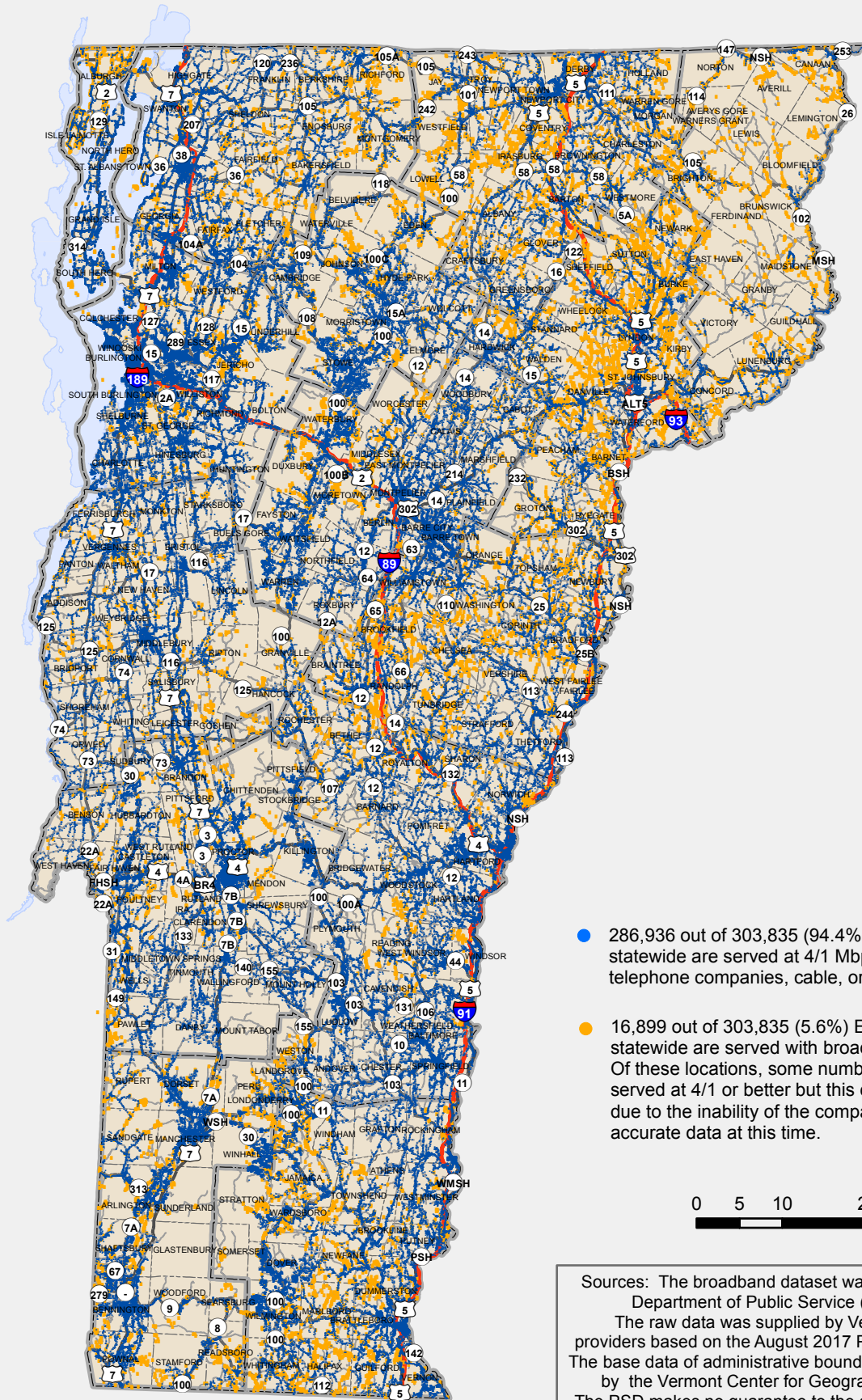
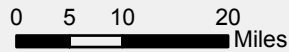


# Broadband Availability by E911 Building Location 4 Mbps Down / 1 Mbps Up or Better



- 286,936 out of 303,835 (94.4%) E911 building locations statewide are served at 4/1 Mbps or better by independent telephone companies, cable, or fiber to the premises.
- 16,899 out of 303,835 (5.6%) E911 building locations statewide are served with broadband less than 4/1 Mbps. Of these locations, some number are already served at 4/1 or better but this cannot be verified due to the inability of the companies to provide accurate data at this time.



Sources: The broadband dataset was prepared by the Vermont Department of Public Service (PSD) on 1/3/2018. The raw data was supplied by Vermont internet service providers based on the August 2017 PSD request for information. The base data of administrative boundaries and roads are supplied by the Vermont Center for Geographic Information (VCGI). The PSD makes no guarantee to the accuracy of this information.