

Appendix D – Fixed Wireless Coverage Maps

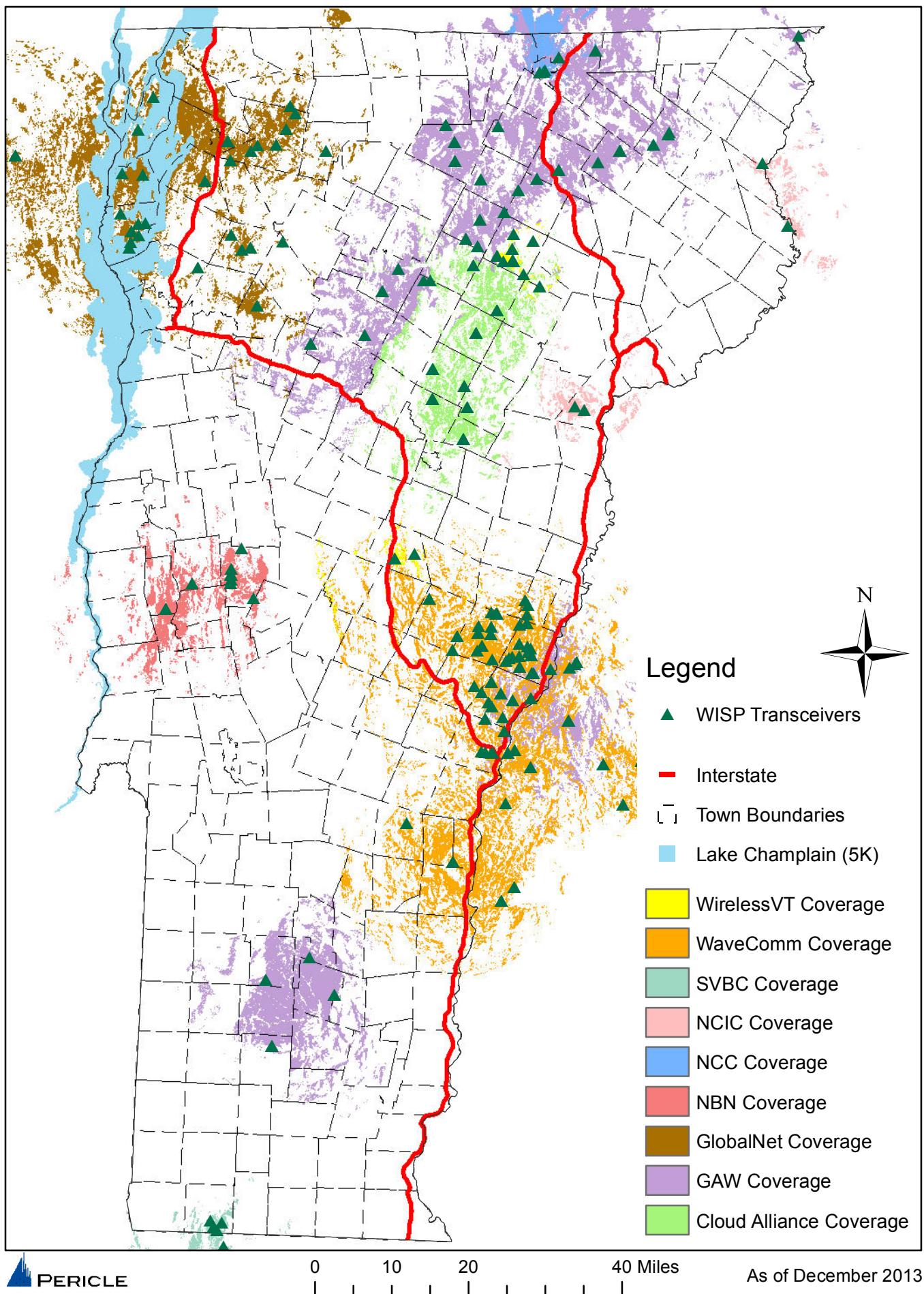
This appendix contains coverage maps for each of nine Wireless Internet Service Providers (WISPs) in Vermont. Table 14 below provides summary information for each WISP including date of most recent WISP transceiver input, frequency bands used and number of transceivers modeled. Due to their relatively smaller coverage areas, these WISP coverage predictions and resulting maps have a 30 meter resolution whereas the mobile wireless coverage maps are modeled with 90 meter resolution. These maps were generated by exporting the EDX Signal™ coverage prediction data Esri Arcview. Soft copies have been provided to VCGI separately.

Table 14 - WISP Transceiver Summary						
WISP	Latest Transceiver Input	900 MHz Band Transceivers (Unlicensed)	2400 MHz Band Transceivers (Unlicensed)	3650 MHz Band Transceivers (Licensed)	5800 MHz Band Transceivers (Unlicensed)	Total Transceivers Modeled
Cloud Alliance	Q4 2013	8	3	14	N/A	25
GlobalNet	Q2 2010	31	11	N/A	N/A	42
Great Auk Wireless (GAW) North	Q4 2013	24	18	N/A	7	49
GAW South	Q4 2013	5	1	2	N/A	8
GAW Finowen	Q4 2013	11	N/A	N/A	4	15
NBN	Q4 2013	11	5	N/A	N/A	16
NCC	Q2 2010	1	3	N/A	N/A	4
NCIC	Q4 2013	12	N/A	N/A	N/A	12
SVBC	Q4 2013	5	N/A	N/A	N/A	5
WaveComm	Q3 2012	27	51	4	N/A	82
Wireless VT	Q2 2010	N/A	21	N/A	N/A	21
	Totals:	135	113	20	11	279

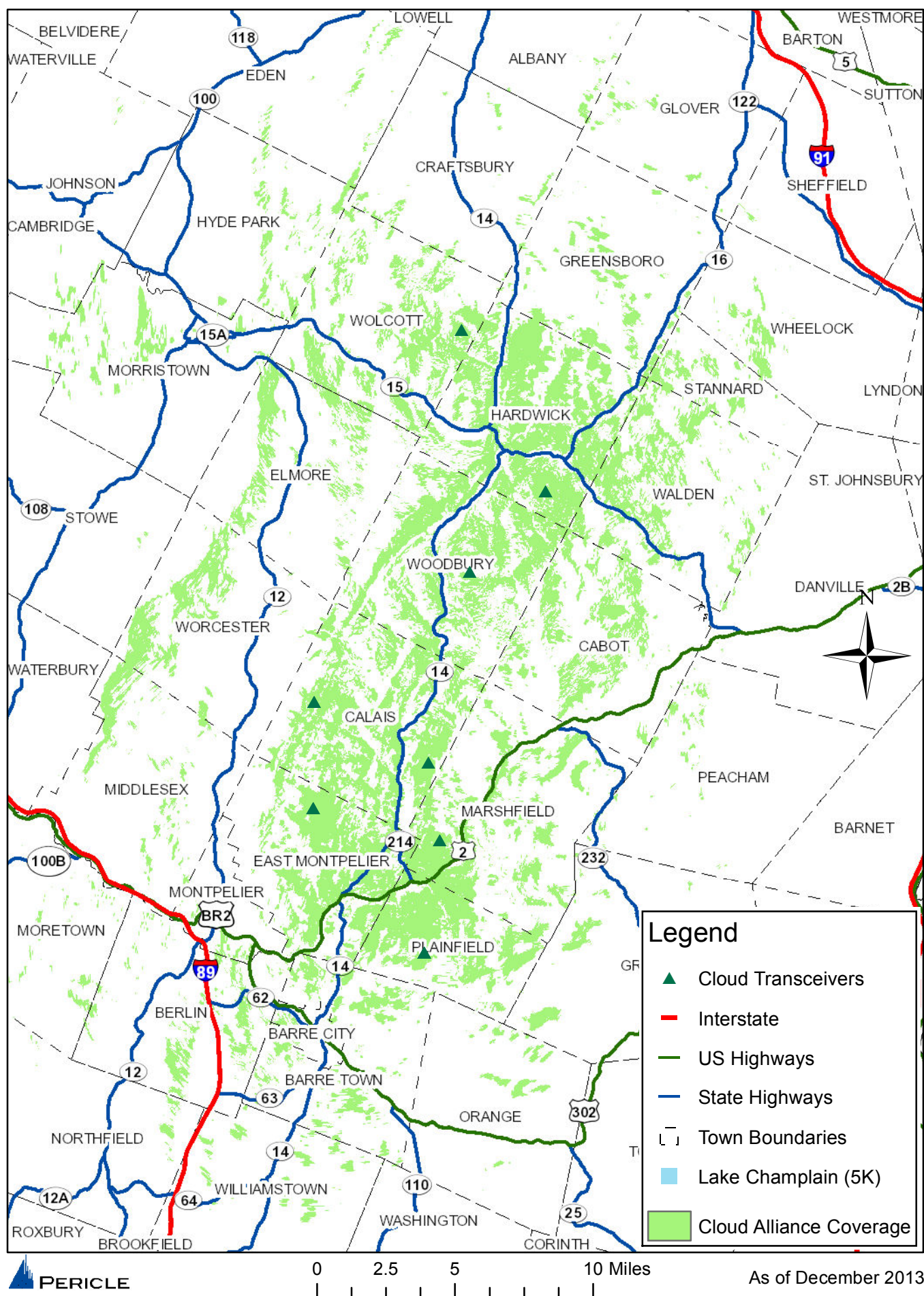
Note that these maps are dependent on WISP's providing input for their system deployments including transceiver locations and parameters. Data for several of the WISPs (GlobalNet, NCC and WirelessVT) is quite dated and has not been updated since the 2010 predictions. All WISP transceivers were re-modeled in this project, whether or not new transceiver information was provided, in order to provide consistent coverage maps using the newer NLCD 2006 clutter database and 30 meter resolution. For each WISP, a separate coverage prediction and raster data set for each frequency band was generated and the combined coverage area of all bands for each WISP is shown in this Appendix. Coverage area for each WISP is therefore presented in a single coverage map with the exception of Great Auk Wireless (GAW). In order to maintain 30 meter resolution, the GAW coverage prediction was generated separately for three geographic areas: GAW North (includes Morrisville, Craftsbury and NEK networks), GAW South and GAW Finowen which shows coverage from those transceiver assets acquired from Finowen.

All of the technologies reported by the WISPs and modeled in these coverage maps are capable of broadband uplink (min. 200 kbps) and downlink (min. 768 kbps) data speeds.

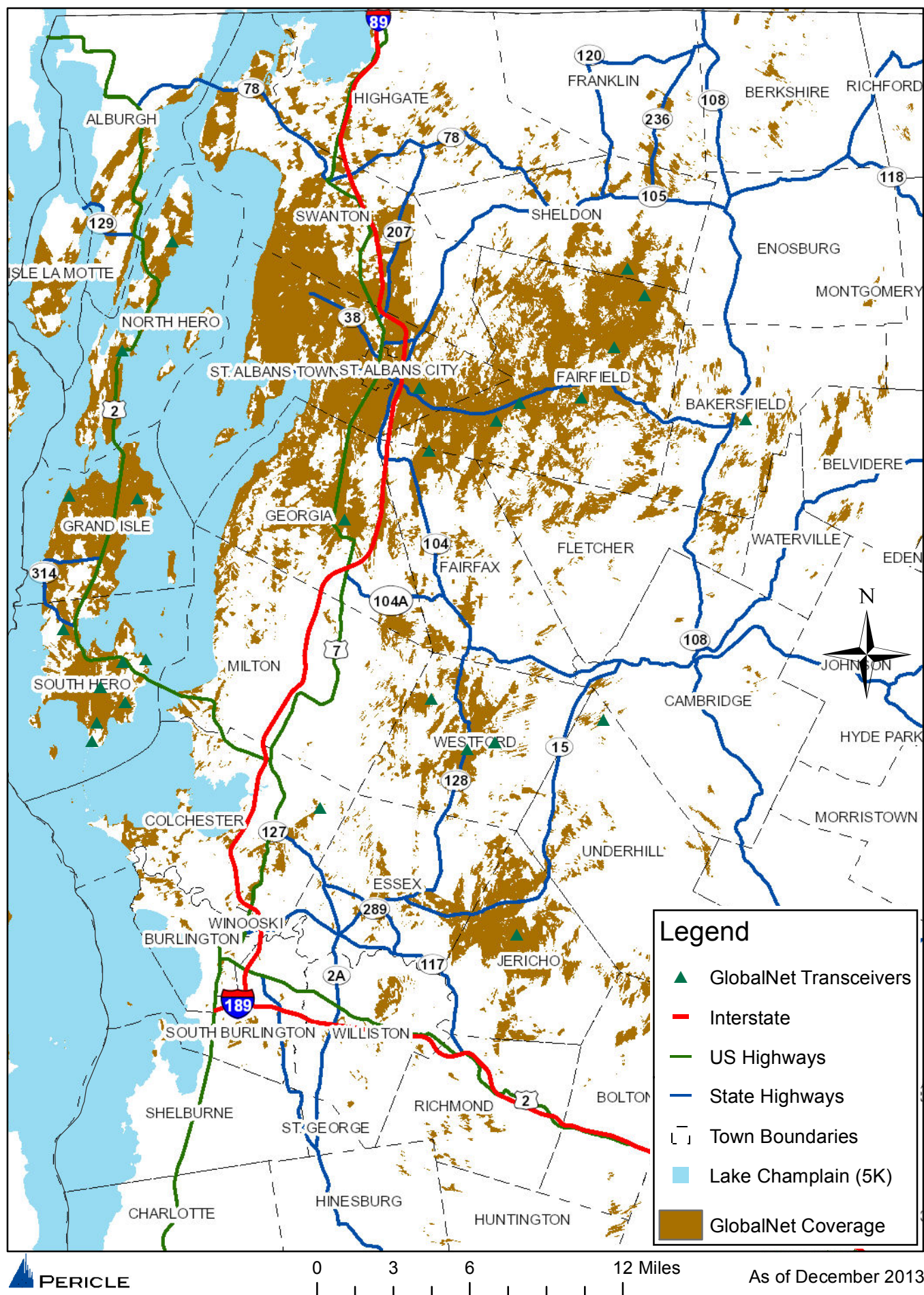
Vermont WISP Coverage and Transceiver Locations



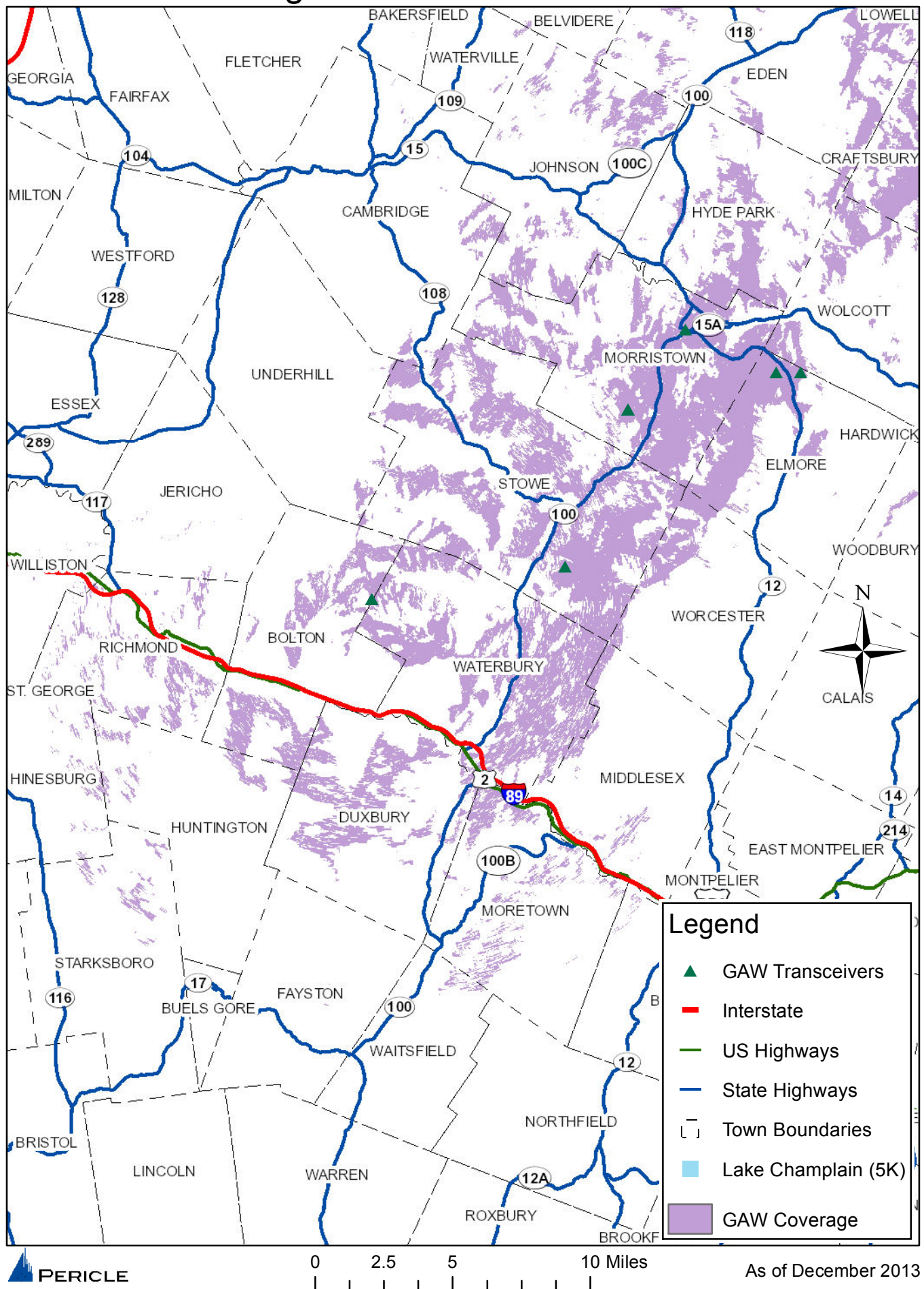
Cloud Alliance Coverage and Transceiver Locations



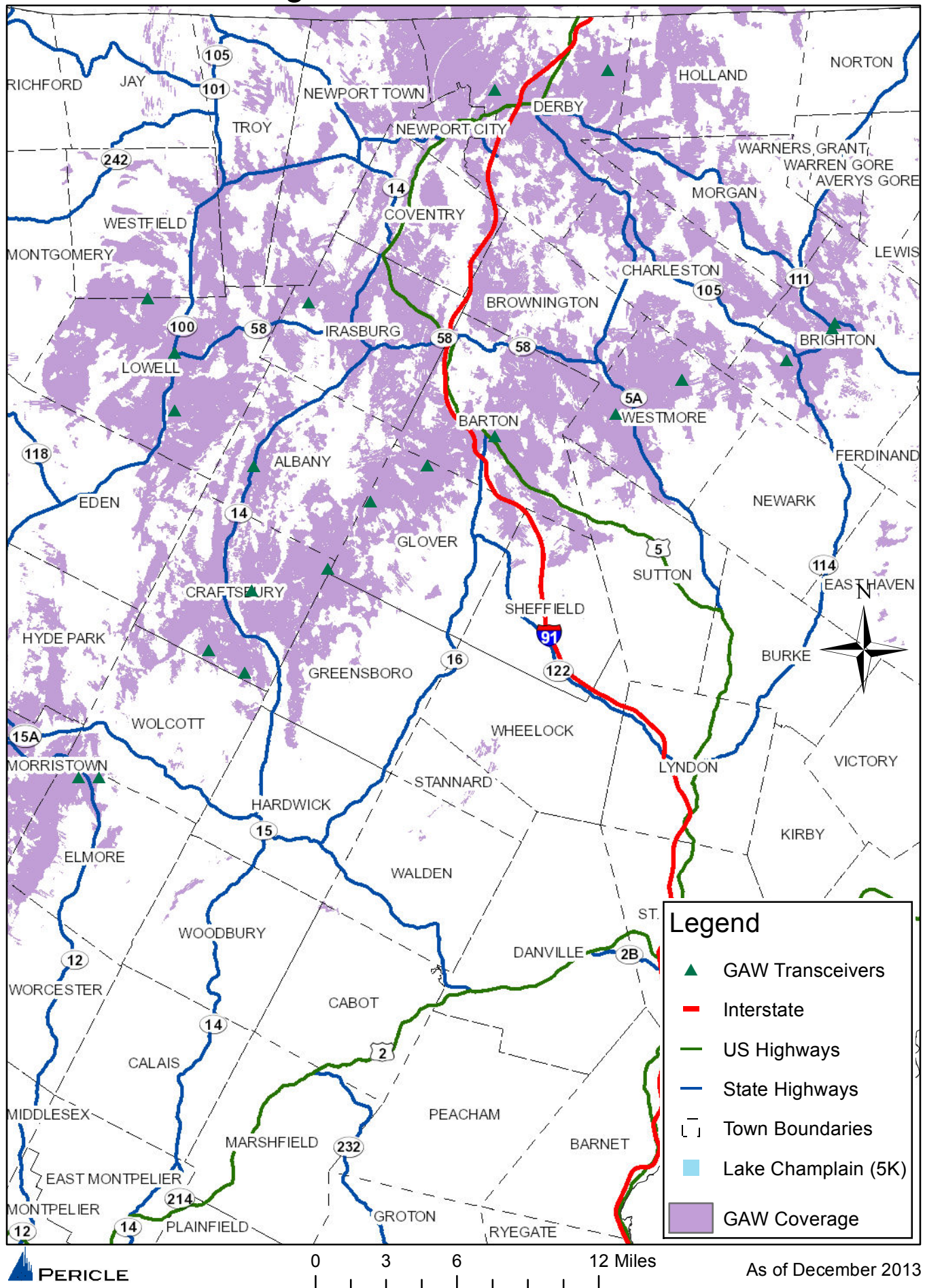
GlobalNet Coverage and Transceiver Locations



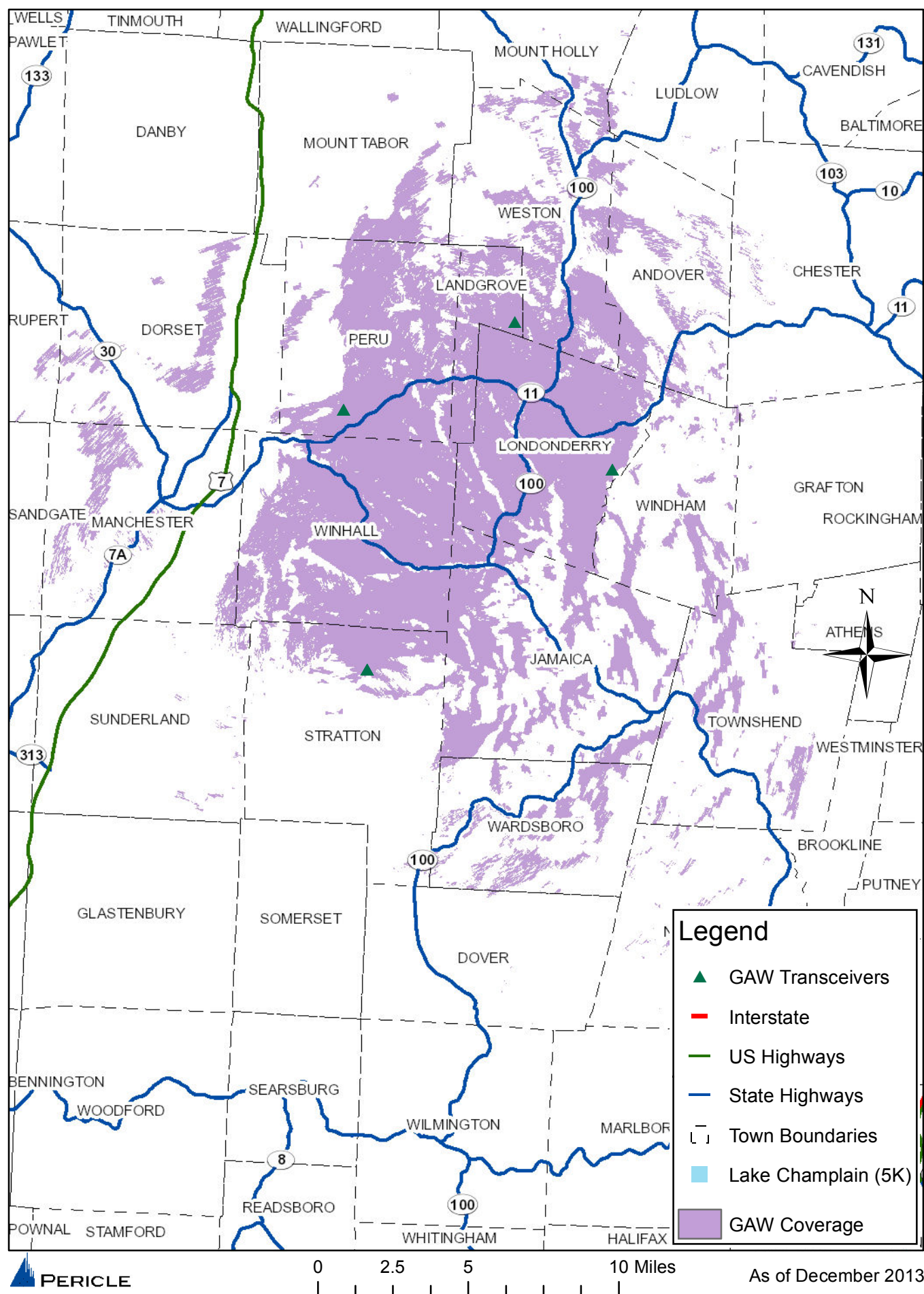
Great Auk North (Morrisville Network) Coverage and Transceiver Locations



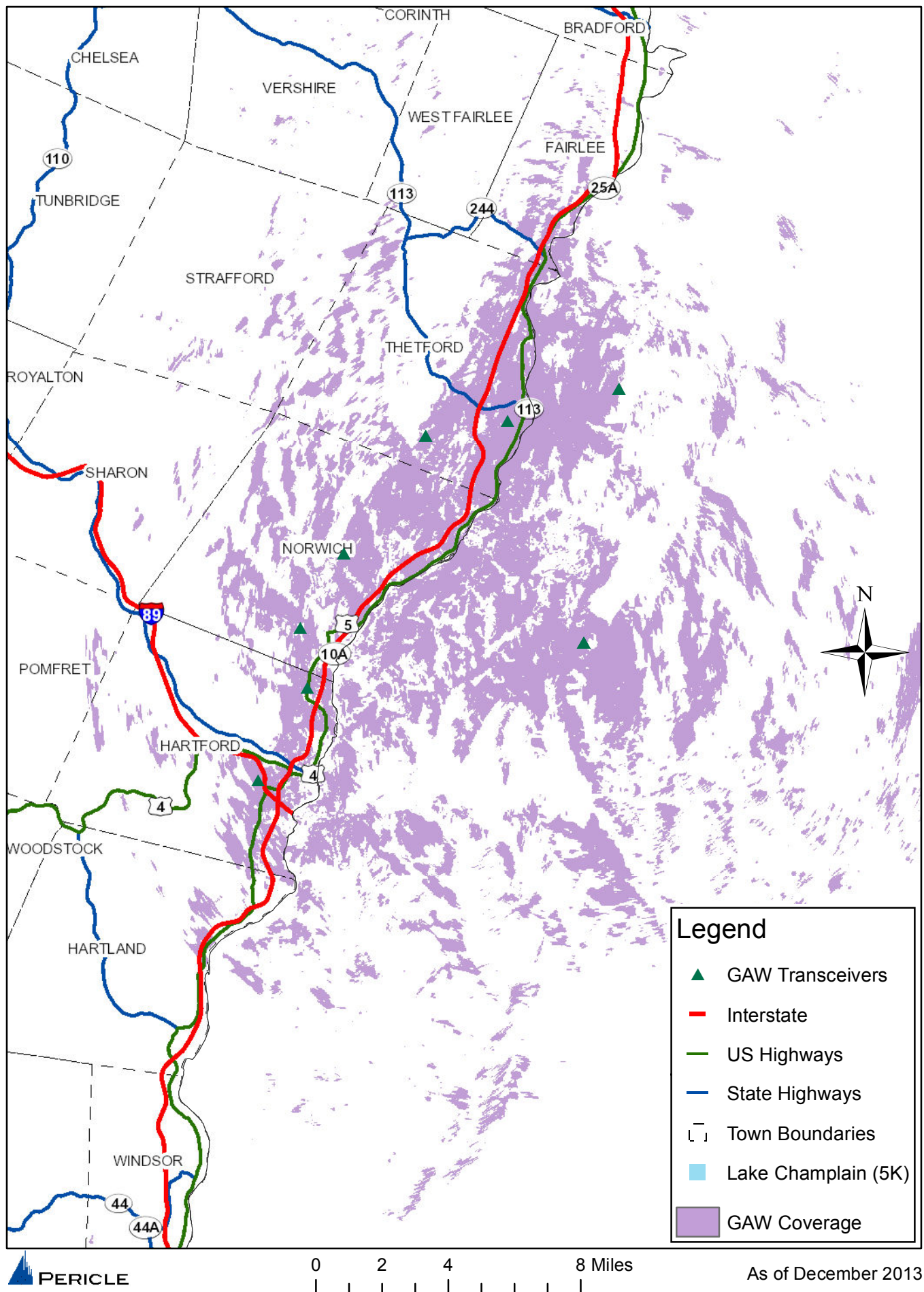
Great Auk North (Craftsbury and NEK Networks) Coverage and Transceiver Locations



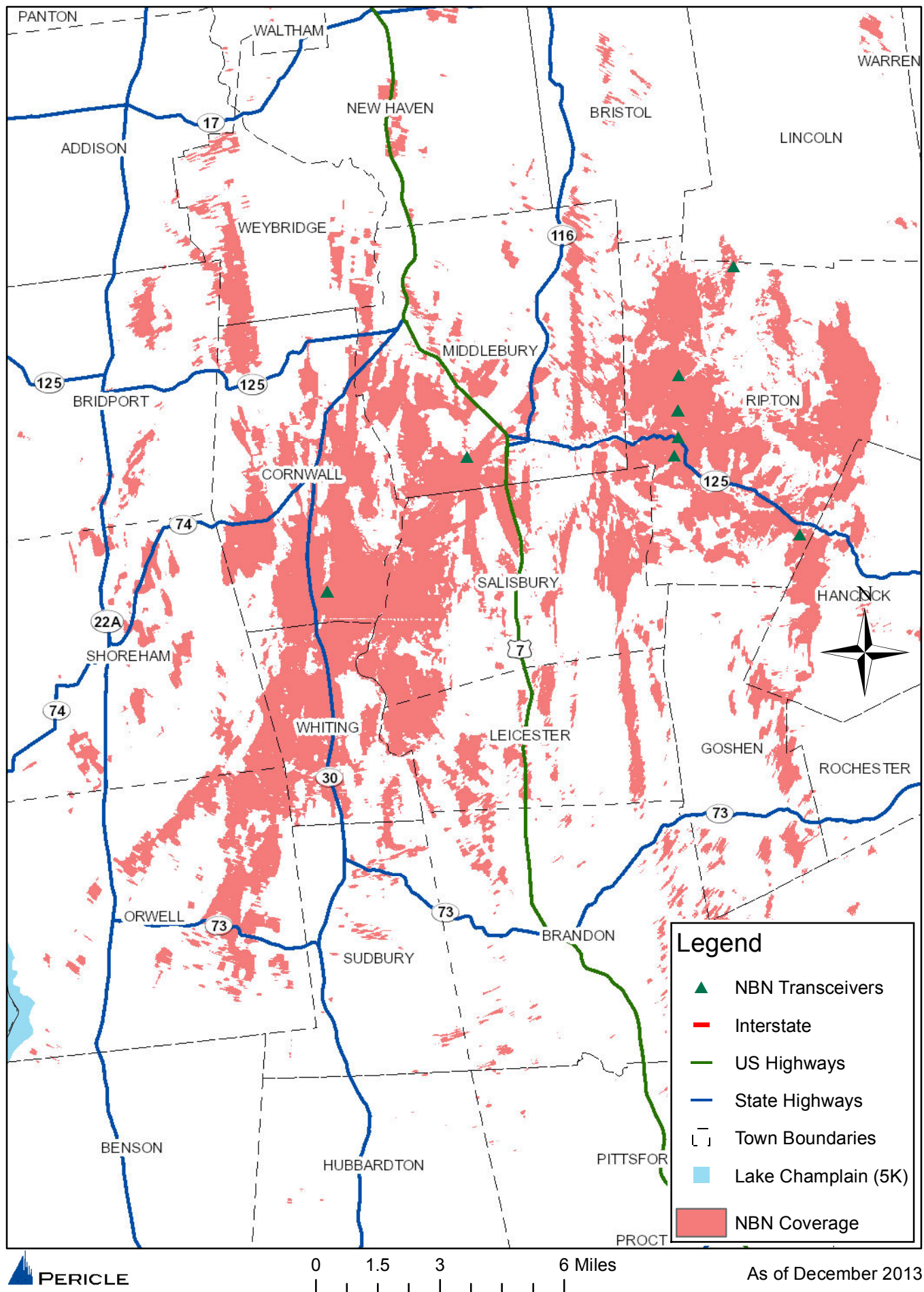
Great Auk South Coverage and Transceiver Locations



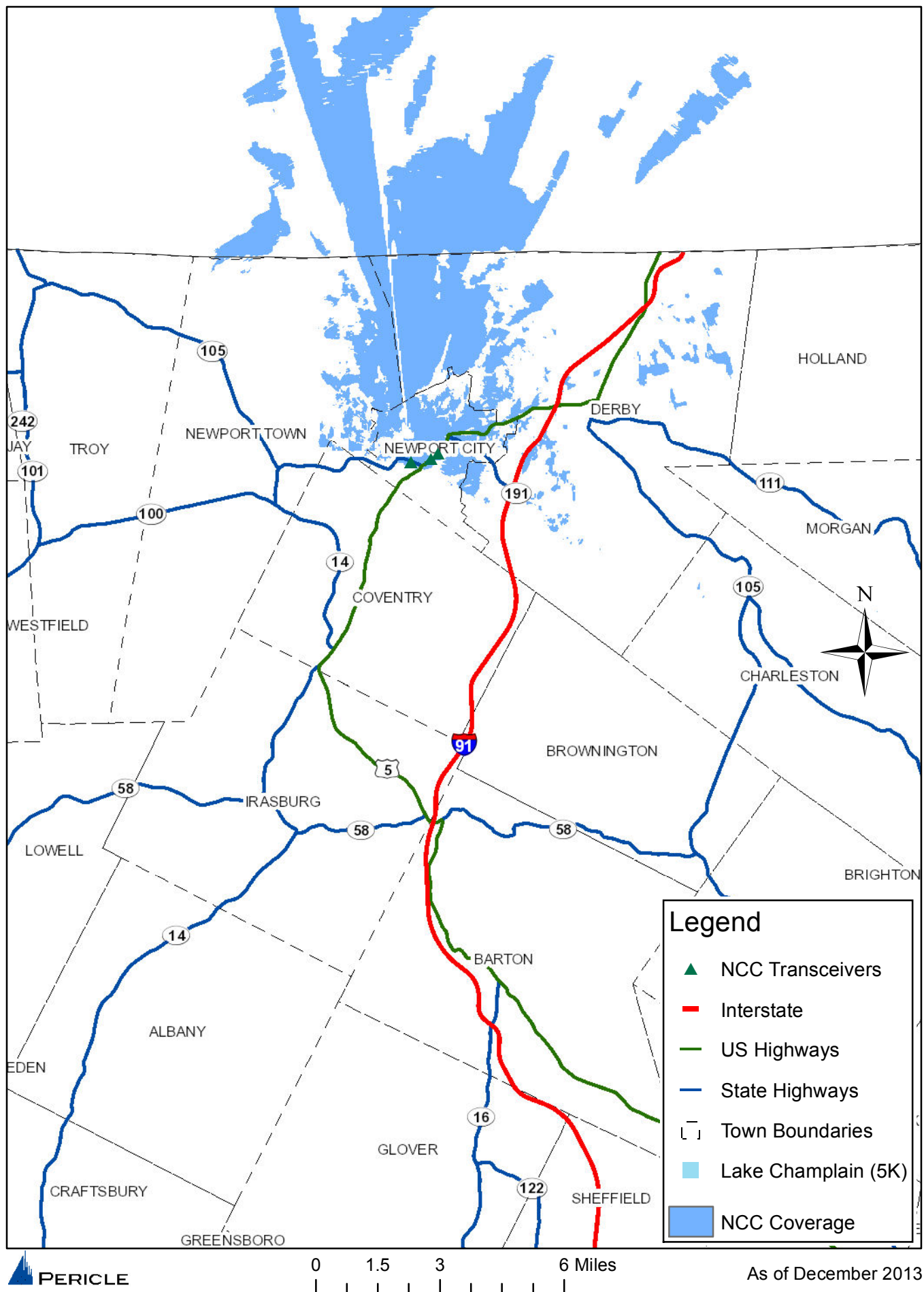
Great Auk Finowen Coverage and Transceiver Locations



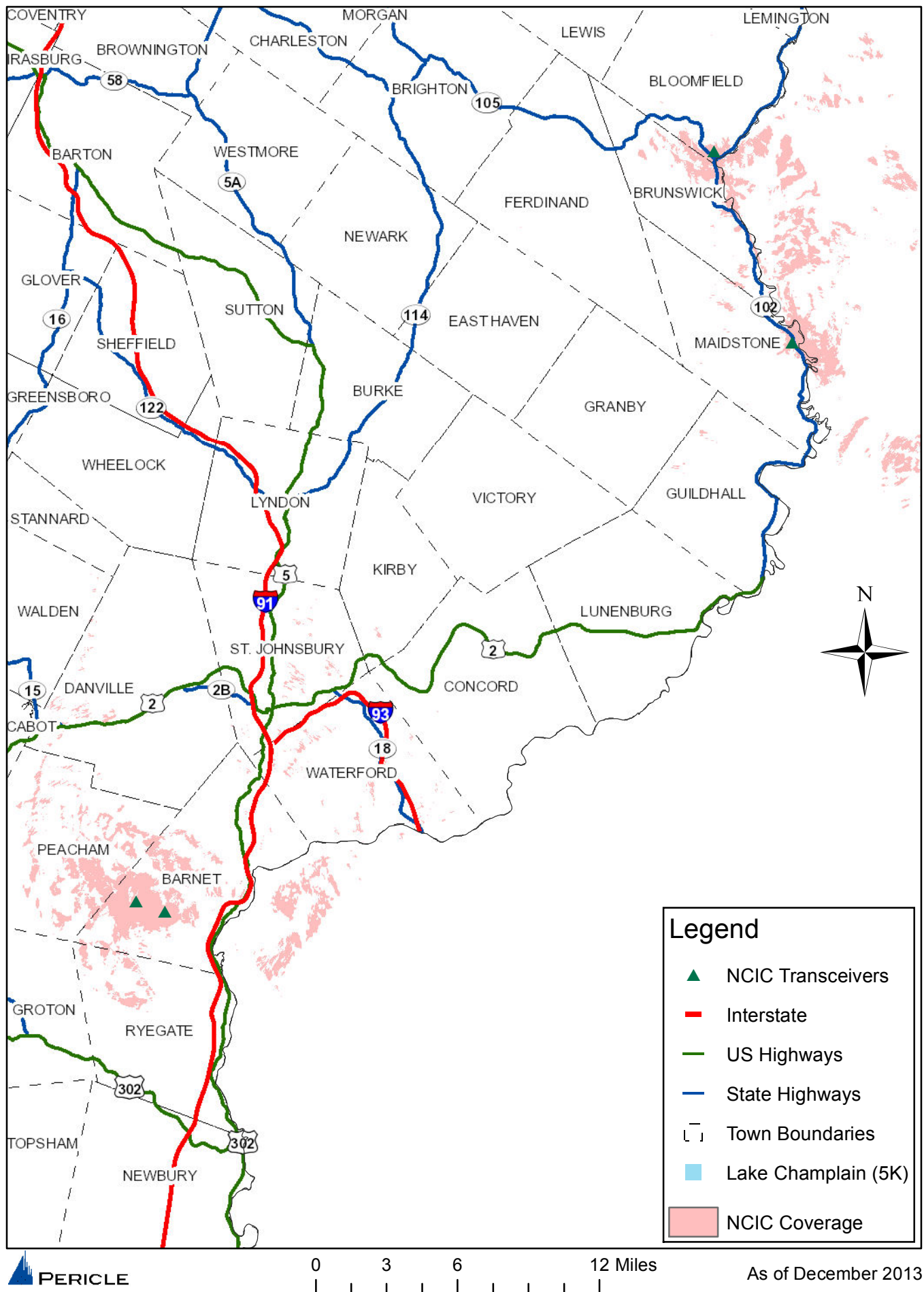
NBN Coverage and Transceiver Locations



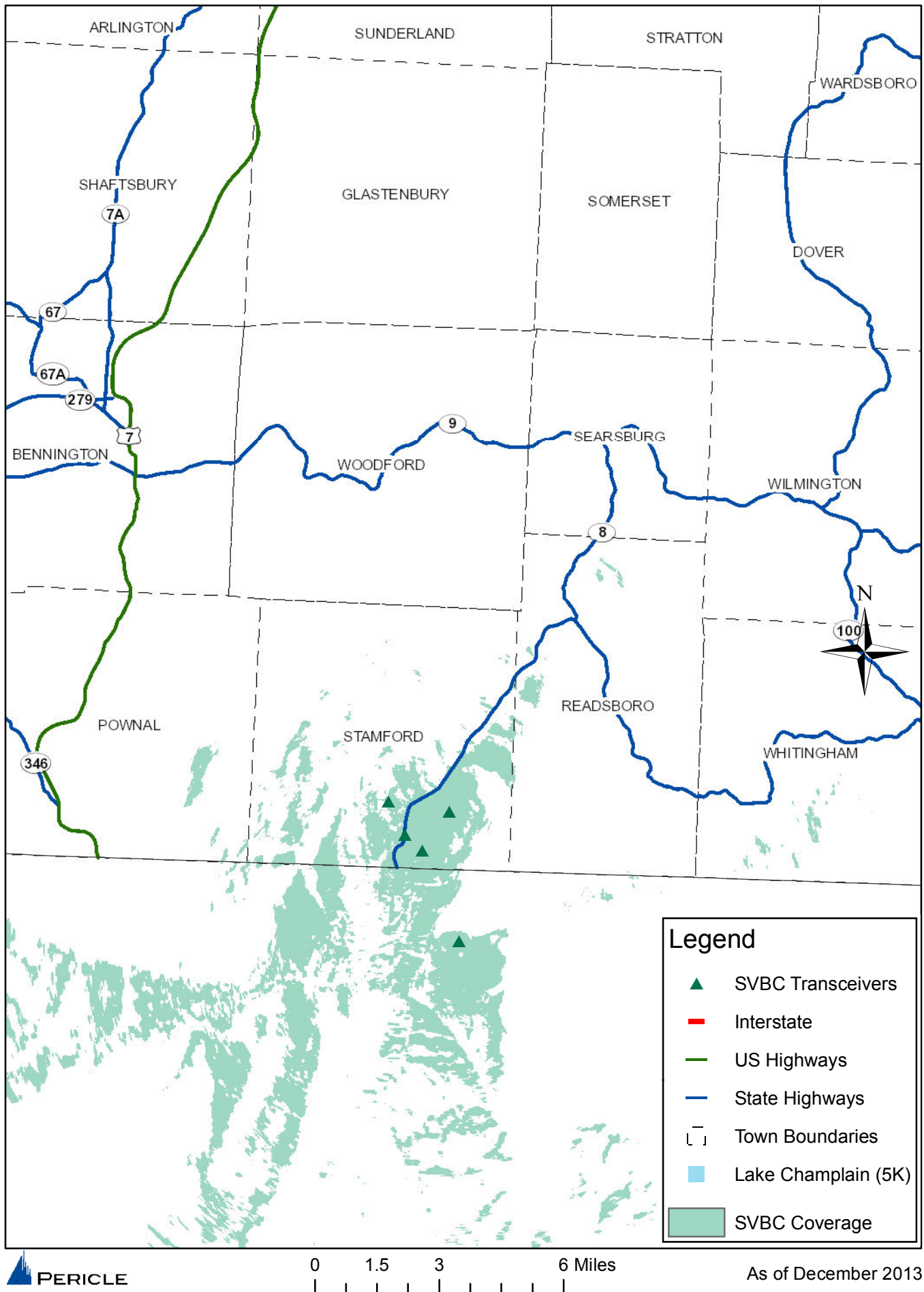
NCC Coverage and Transceiver Locations



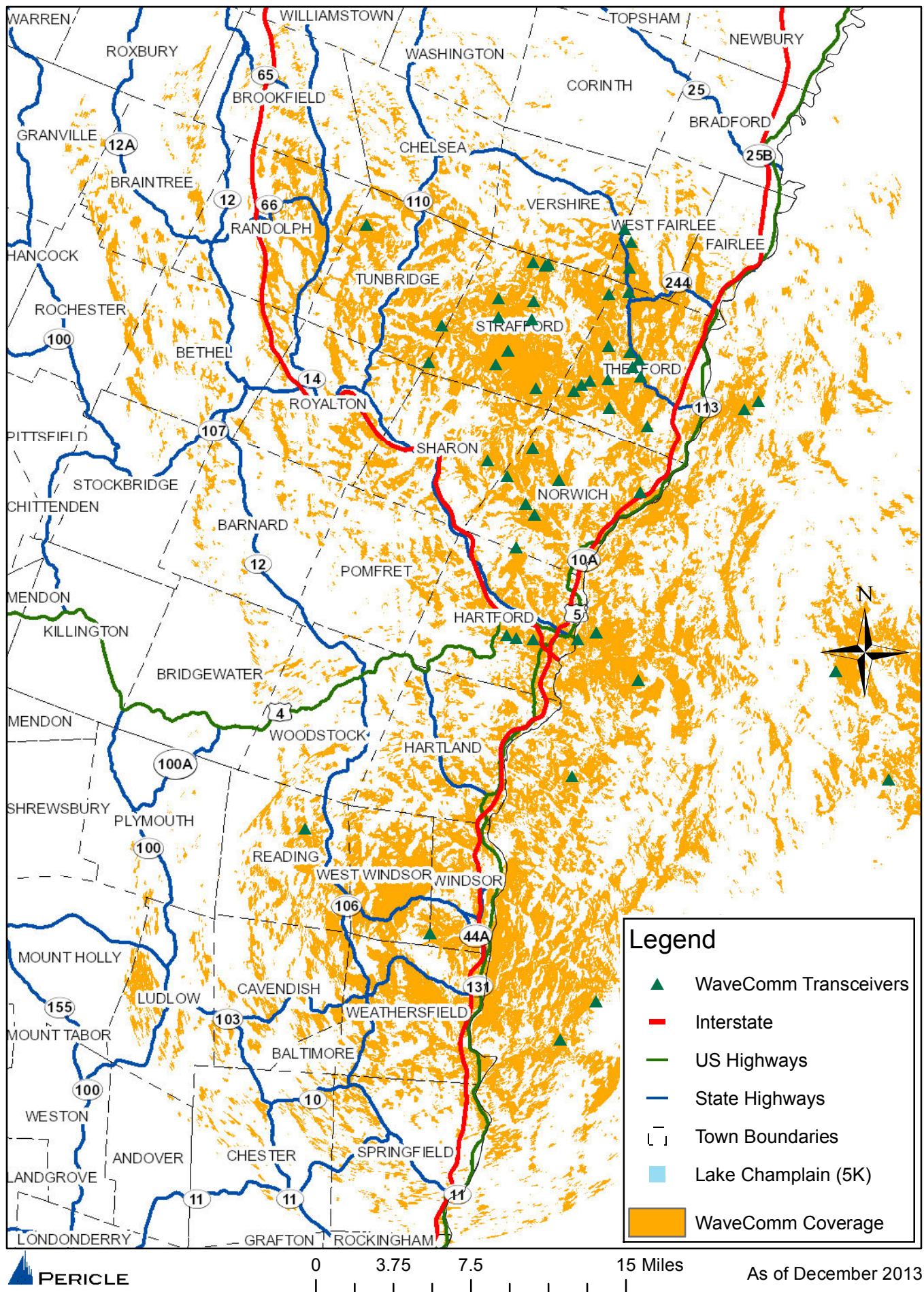
NCIC Coverage and Transceiver Locations



SVBC Coverage and Transceiver Locations



WaveComm Coverage and Transceiver Locations



WirelessVT Coverage and Transceiver Locations

