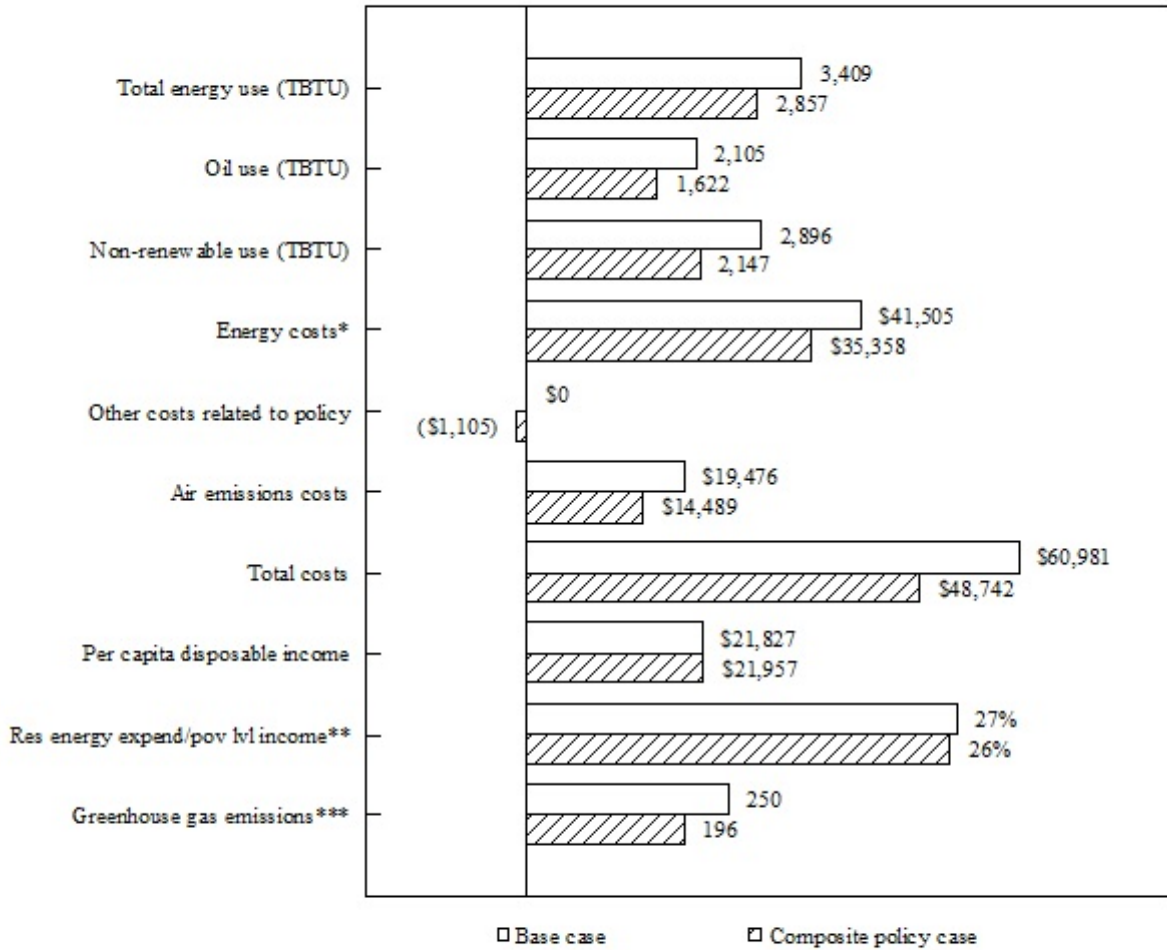


figures from chapter 5

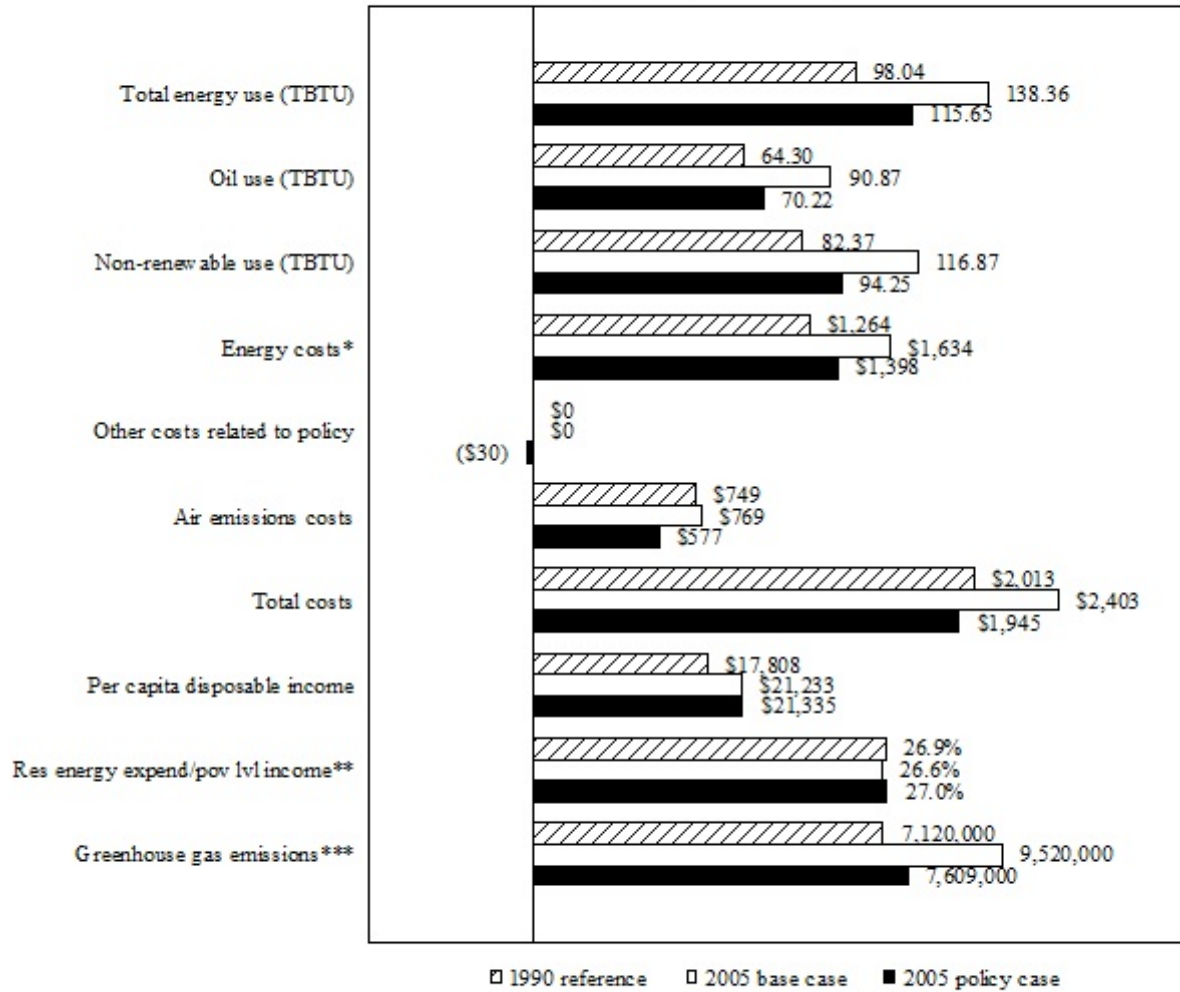
**Figure 5.11 Cumulative Impacts of Base Case and Composite Policy Case  
1997-2020**



Source: VT DPS

Note: All dollars are millions of 1995\$, except "Per Capita Disposable Income" which is 1995\$. \*Net of policy taxes \*\*Per household residential energy expenditure as a % of poverty level income \*\*\*GHG emissions in millions of tons of CO2 equivalent

**Figure 5.I.2 Impacts of Composite Policy Case**  
Selected Impacts in 2005

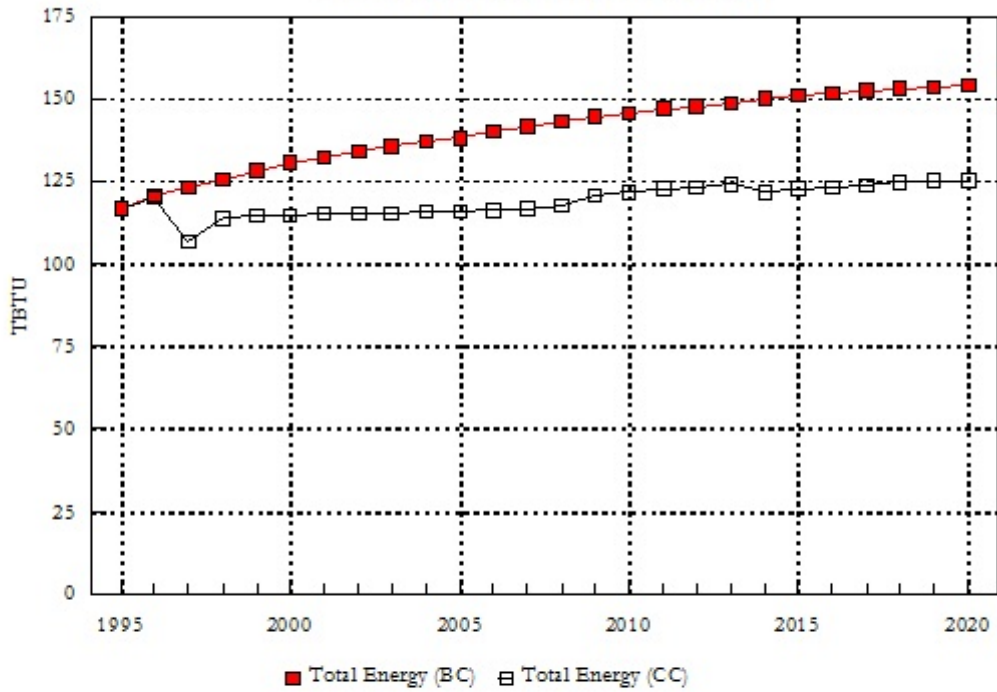


Source: Vt. DFS

Note: All dollars are millions of 1995\$, except "Per Capita Disposable Income" which is 1995\$. \*Net of policy taxes

\*\*Per household residential energy expenditure as a % of poverty level income \*\*\*Greenhouse gases, in CO2 equivalent.

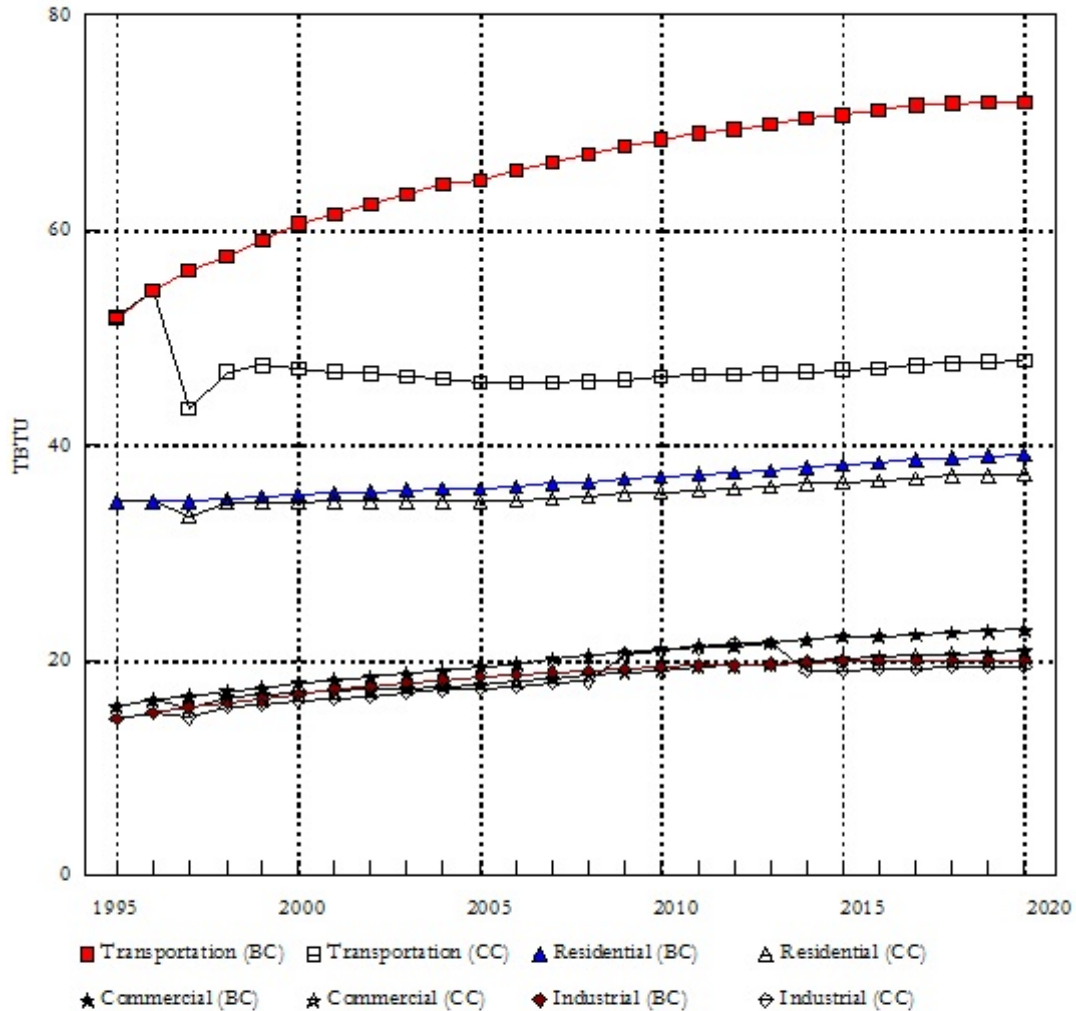
**Figure 5.II.1 Vermont Total Energy Use**  
Base Case (BC) and Composite Case (CC)



	1990	1995	2000	2005	2010	2015	2020	'95-2020 Avg Ann Growth	'97-2020 Cum % Change
Total Energy (BC)	98.0	116.7	130.5	138.4	145.7	150.9	153.9	1.11%	
Total Energy (CC)	98.0	116.7	114.8	115.7	121.8	122.6	125.4	0.29%	-16.2%

Note: 1995 and 1996 values are estimates. Source: VT DPS

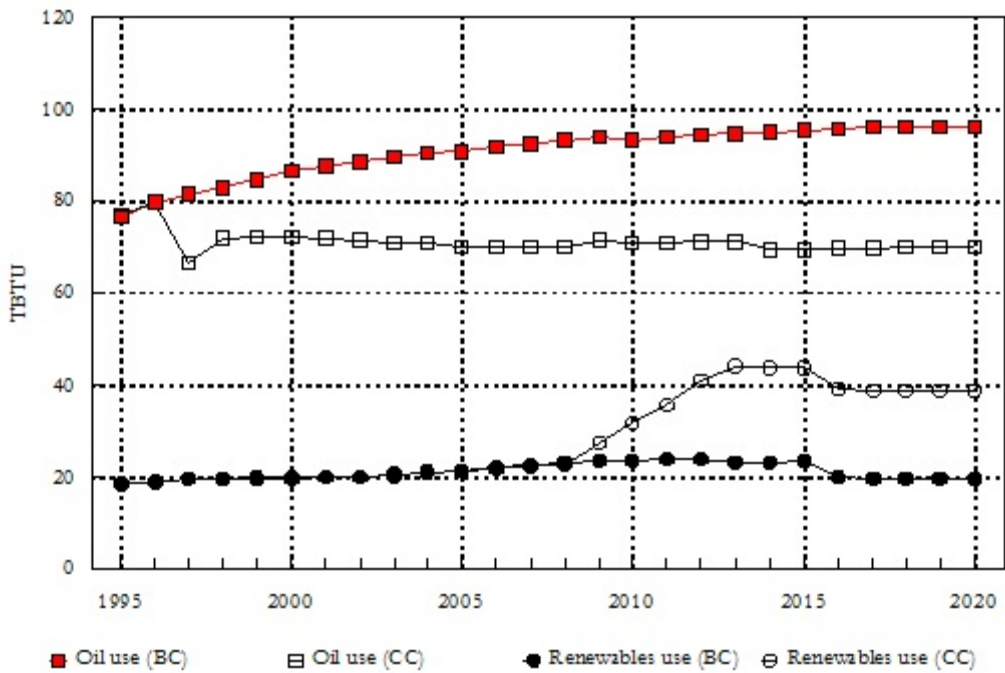
**Figure 5.II.2 Vermont Energy Use by Sector**  
Base Case (BC) and Composite Case (CC)



	1990	1995	2000	2005	2010	2015	2020	'95-2020 Avg Ann Growth	'97-2020 Cum % Change
Transportation (BC)	42.1	51.9	60.5	64.7	68.3	70.7	71.9	1.32%	
Transportation (CC)	42.1	51.9	47.1	45.8	46.3	46.9	47.9	-0.32%	-29.8%
Residential (BC)	31.5	34.7	35.4	36.0	37.0	38.2	39.2	0.49%	
Residential (CC)	31.5	34.7	34.6	34.8	35.6	36.5	37.4	0.30%	-3.6%
Commercial (BC)	12.0	15.7	17.8	19.3	21.0	22.1	22.8	1.51%	
Commercial (CC)	12.0	15.7	16.9	17.7	19.1	20.1	20.8	1.13%	-8.1%
Industrial (BC)	12.4	14.5	16.8	18.4	19.3	19.9	20.0	1.30%	
Industrial (CC)	12.4	14.5	16.2	17.4	20.8	19.1	19.4	1.17%	-1.4%
<b>Total (BC)</b>	<b>98.0</b>	<b>116.7</b>	<b>130.5</b>	<b>138.4</b>	<b>145.7</b>	<b>150.9</b>	<b>153.9</b>	<b>1.11%</b>	
<b>Total (CC)</b>	<b>98.0</b>	<b>116.7</b>	<b>114.8</b>	<b>115.7</b>	<b>121.8</b>	<b>122.6</b>	<b>125.4</b>	<b>0.29%</b>	<b>-16.2%</b>

Note: 1995 and 1996 values are estimates. Source: VT DPS

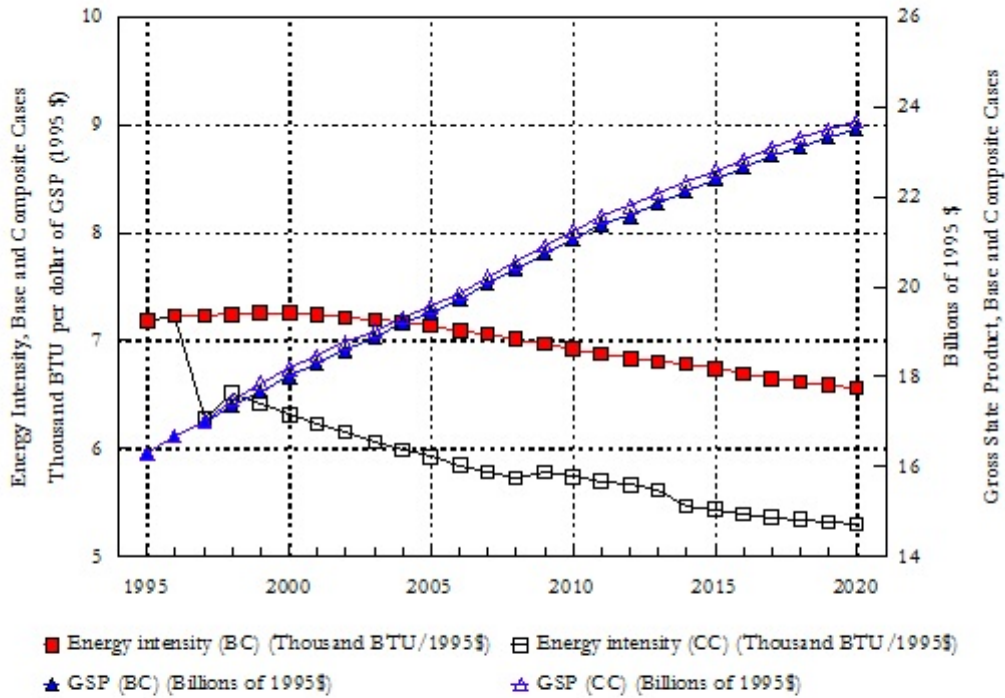
**Figure 5.III.1 Vermont Oil Use and Renewables Use**  
Base Case (BC) and Composite Case (CC)



	1990	1995	2000	2005	2010	2015	2020	'95-2020 Avg Ann Growth	'97-2020 Cum % Change
Oil use (BC)	64.3	76.7	86.6	90.9	93.4	95.4	96.1	0.91%	
Oil use (CC)	64.3	76.7	72.1	70.2	70.8	69.4	70.2	-0.35%	-22.93%
Renewables use (BC)	15.7	18.4	19.8	21.5	23.7	23.3	19.7	0.27%	
Renewables use (CC)	15.7	18.4	19.7	21.4	31.6	43.7	38.9	3.04%	38.67%

Note: 1995 and 1996 values are estimates. Source: VT DPS

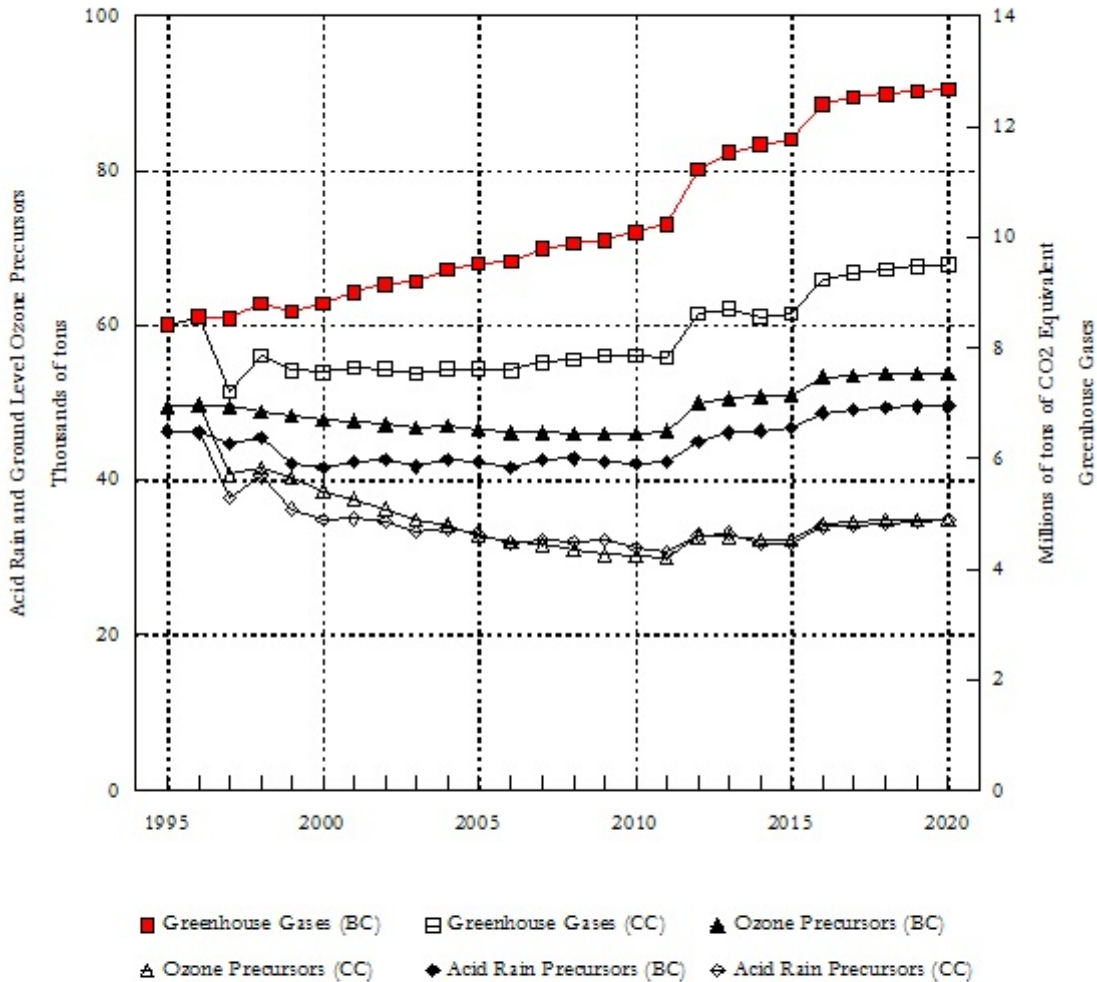
**Figure 5.IV.1 Vt. Energy Intensity and Gross State Product (GSP)**  
Base Case (BC) and Composite Case (CC)



	1990	1995	2000	2005	2010	2015	2020	'95-2020 Avg Ann Growth	'97-2020 Cum % Change
Energy intensity (BC)	6.78	7.17	7.26	7.13	6.93	6.74	6.55	-0.36%	
Energy intensity (CC)	6.78	7.17	6.31	5.92	5.74	5.43	5.30	-1.20%	-16.64%
GSP (BC)	14.46	16.27	17.99	19.40	21.04	22.39	23.48	1.48%	
GSP (CC)	14.46	16.27	18.19	19.54	21.22	22.59	23.67	1.51%	0.83%

Note: Energy intensity is Total energy use (in thousand BTU) per dollar of GSP (in 1995\$). 1995 and 1996 values are estimates. Source: VT DPS

**Figure 5.VIII.1 Vermont Emissions from Energy Use**  
Base Case (BC) and Composite Case (CC)



	1990	1995	2000	2005	2010	2015	2020	'95-2020 Avg Ann Growth	'97-2020 Cum % Change
GHG (BC)	7,120,000	8,420,000	8,780,000	9,520,000	10,080,000	11,750,000	12,680,000	1.65%	
GHG (CC)	7,120,000	8,420,000	7,540,000	7,610,000	7,840,000	8,610,000	9,500,000	0.48%	-21.37%
Ozone precsr (BC)	46,900	49,600	47,800	46,600	46,000	51,000	53,700	0.32%	
Ozone precsr (CC)	46,900	49,600	38,600	33,000	30,200	32,400	34,700	-1.42%	-29.87%
Acid R. precsr (BC)	42,400	46,500	41,500	42,300	42,200	46,700	49,500	0.25%	
Acid R. precsr (CC)	42,400	46,500	34,900	33,100	31,300	31,900	34,800	-1.15%	-24.16%

Note: 1995 and 1996 values are estimates. CO2 emissions from wood are assumed to be zero (sustainable harvest).

Source VT DPS